

PRODUCT RANGE

2024

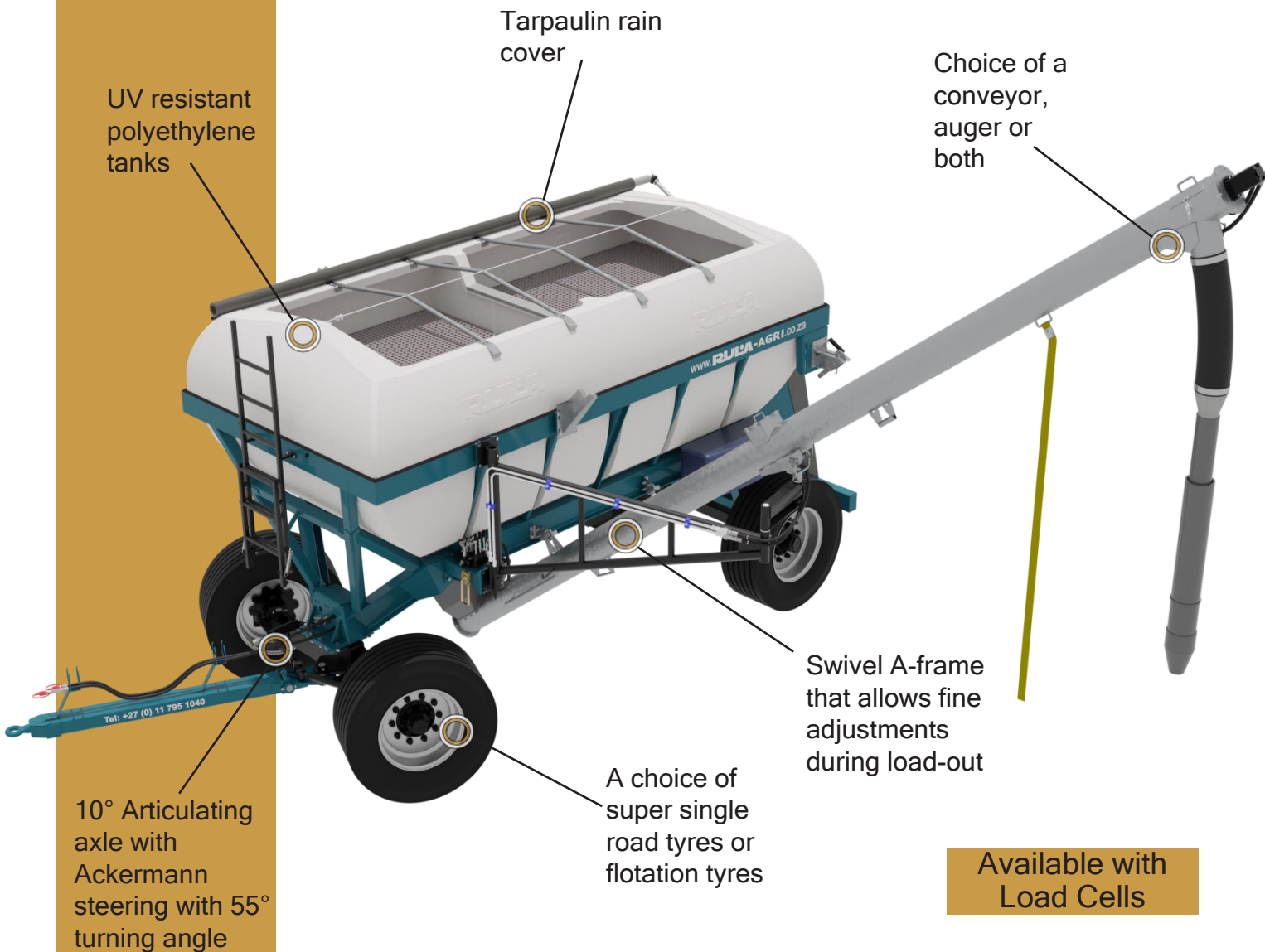


RULA

AGRI

Ferto 120

BULK HANDLING TRAILER



FEATURES

The new Rula-Agri Ferto 120 will put the productivity of your farm into the next gear with the following features:

- One operator needed to fill up or empty the trailer.
- Ideal for filling up a pre-planter with fertiliser or a planter with seed at rates of up to 900kg/min.
- Can be equipped with a 7m auger or a 6.5m cleated conveyor.
- Two hydraulically controlled, discharge sluices at the bottom of the tank.
- Optional extras: Load-Cell & Hydraulic Brake System

CONTACT US
TODAY!



Ferto 120



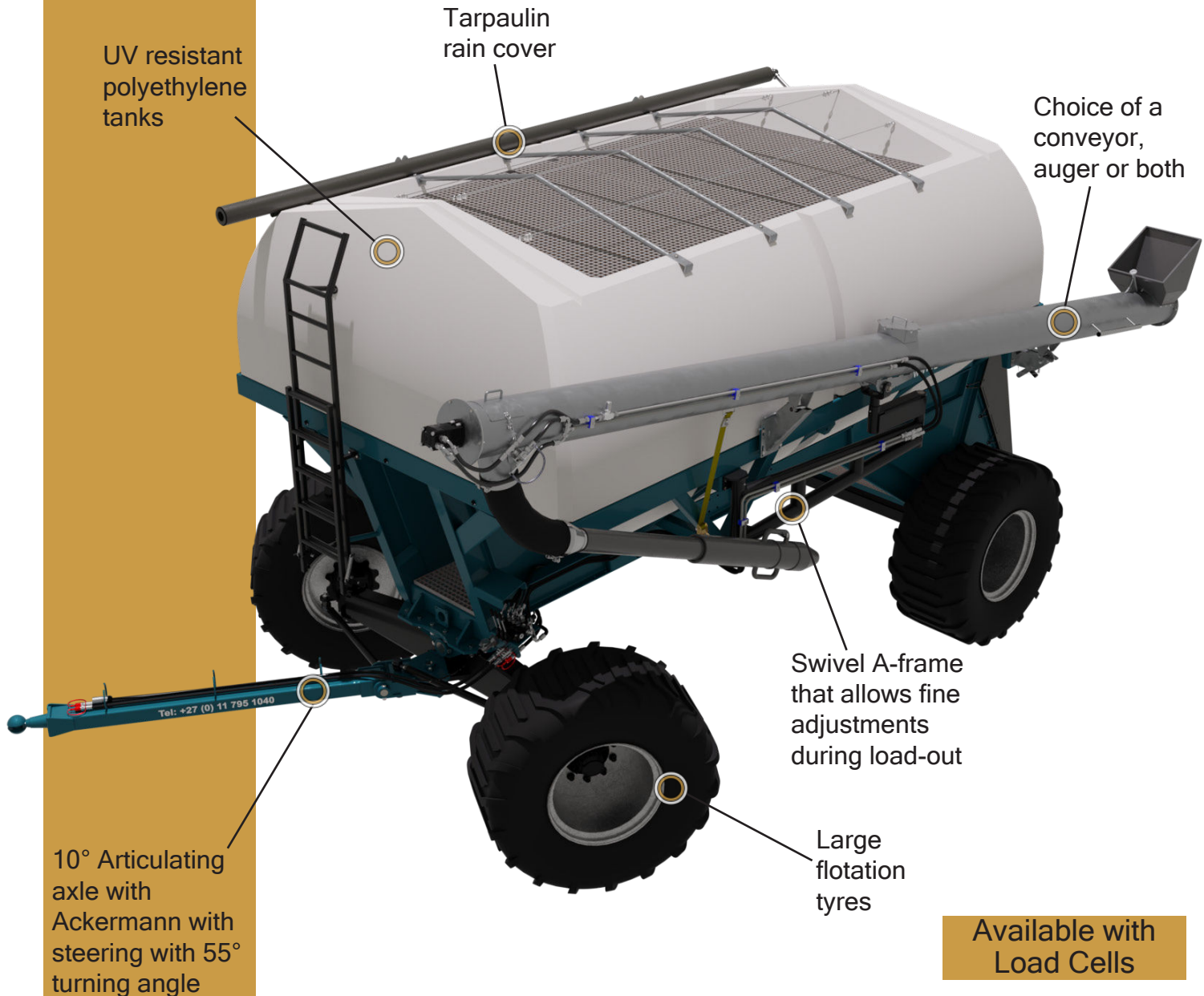
SPECIFICATIONS

Model	FERTO 120
Capacity	12 ton / 11 m ³ (2 x 5.5 m ³ Tanks)
Transport Length	8.6m
Transport Height	3.3m
Transport Width	2.9m
Tyres	385/65R22.5 or 400/60R22.5
Discharge Height	3.55m
Attachment	Auger/Conveyor
Discharge Capacity (Ø200 mm Auger)	±400kg/min @ ±40°
Discharge Capacity (300 mm Conveyor)	±900kg/min @ ±40°



Ferto 200

BULK HANDLING TRAILER



Available with Load Cells

FEATURES

The new Rula-Agri Ferto 200 sets the standard in the material handling sector.

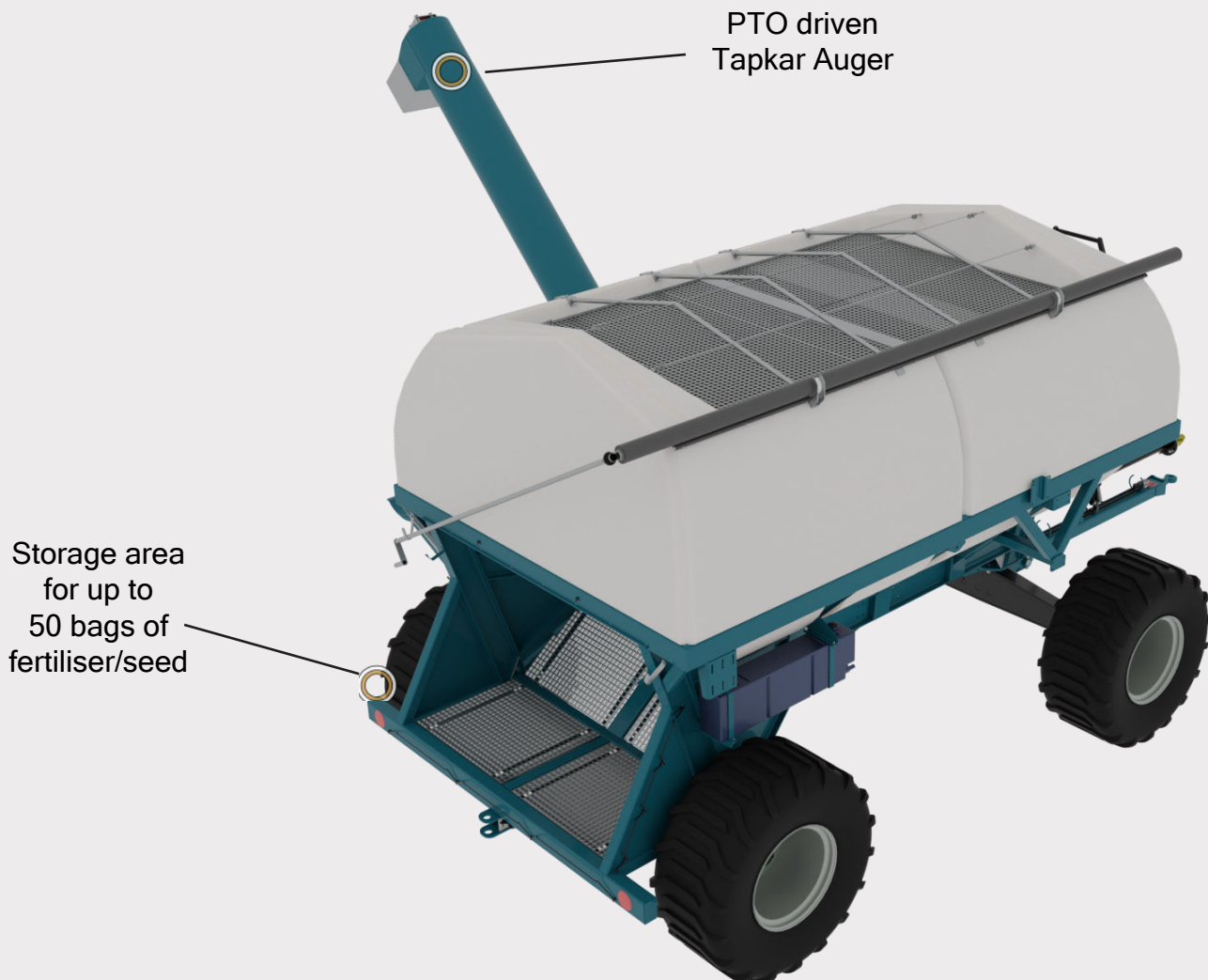
- A multipurpose trailer that can serve as both a fertiliser trailer and a chaser cart.
- A 10° articulating front axle together with a short wheelbase enables the trailer to be used in every area of your farm.
- It also features two hydraulically controlled, quick discharge sluices, enabling handling of two different materials.
- An optional PTO driven split-type loadout auger is available.
- Optional Extras: Load-cell & Hydraulic System

CONTACT US TODAY!



SPECIFICATIONS

Model	FERTO 200
Capacity	24 ton / 20 m ³ (2 x 10 m ³ Tanks)
Transport Length	8.6m
Transport Height	3.65m
Transport Width	3.6m with attachments
Tyres	600/55R26.5
Discharge Height	4.1m
Attachment	Auger/Conveyor/Tapkar Auger
Discharge Capacity (Ø250 mm Auger)	± 0.8m ³ /min @ ± 40°
Discharge Capacity (400 mm Conveyor)	± 1.75m ³ /min @ ± 40°
Main Auger Discharge Capacity	± 2.5m ³ /min @ ± 40°
Wheel Center Available	3048mm & 3656mm



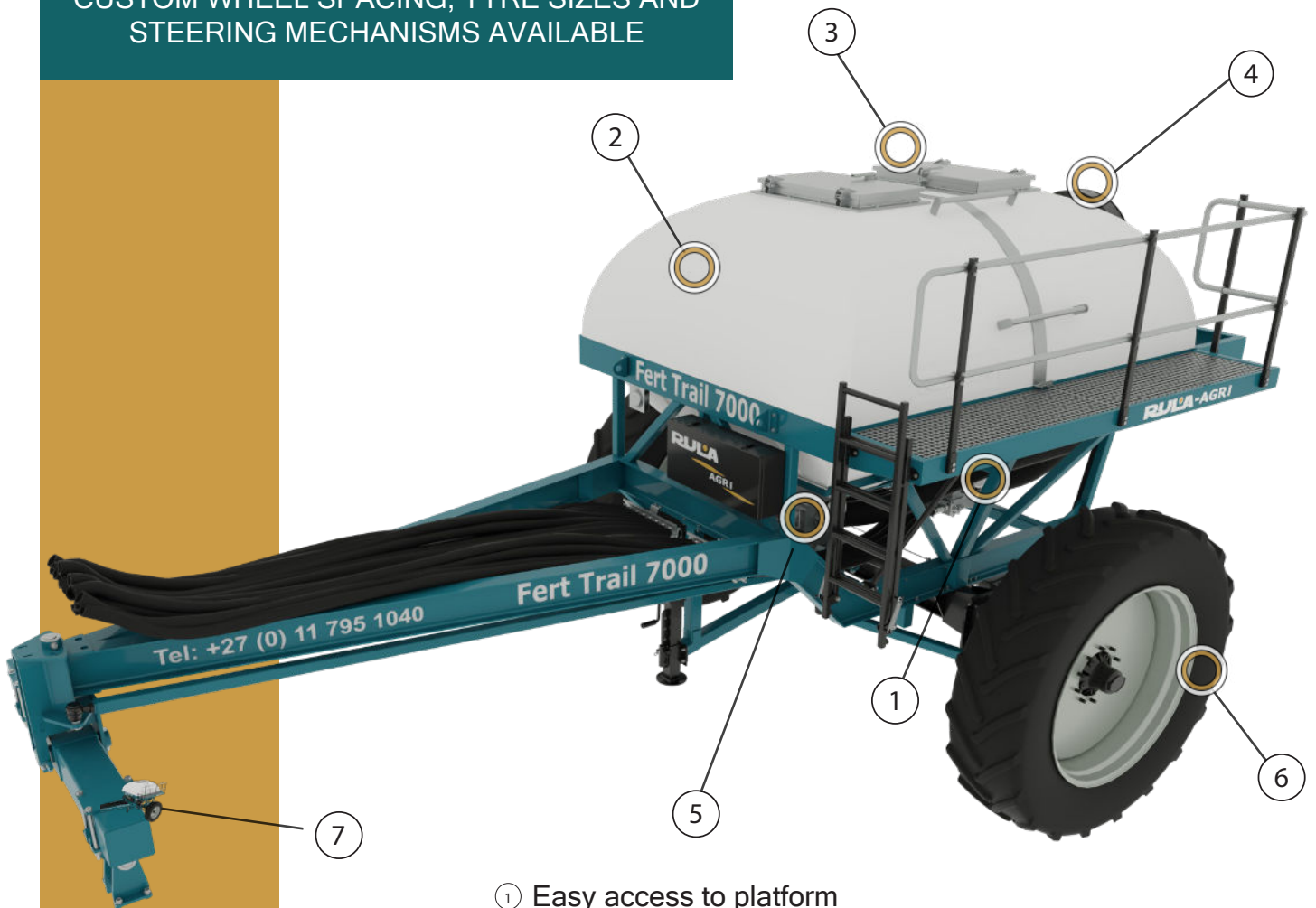
FEATURES

The design of the Rula-Agri Ferto 200 allows it to be converted into a chaser bin to ensure that the trailer can be used throughout the season in order to improve your farm's efficiency. The 400mm seed and fertiliser conveyor, Ø250mm fertiliser auger and the PTO driven chaser cart auger can be fitted on either side of the trailer for ultimate usability. The rear of the Ferto 200 features a storage bay which could house up to 50 bags of seed or fertiliser. The trailer is equipped with a top and rear tarpaulin cover.

Fert Trail

TOW BEHIND COMMODITY CART

CUSTOM WHEEL SPACING, TYRE SIZES AND
STEERING MECHANISMS AVAILABLE

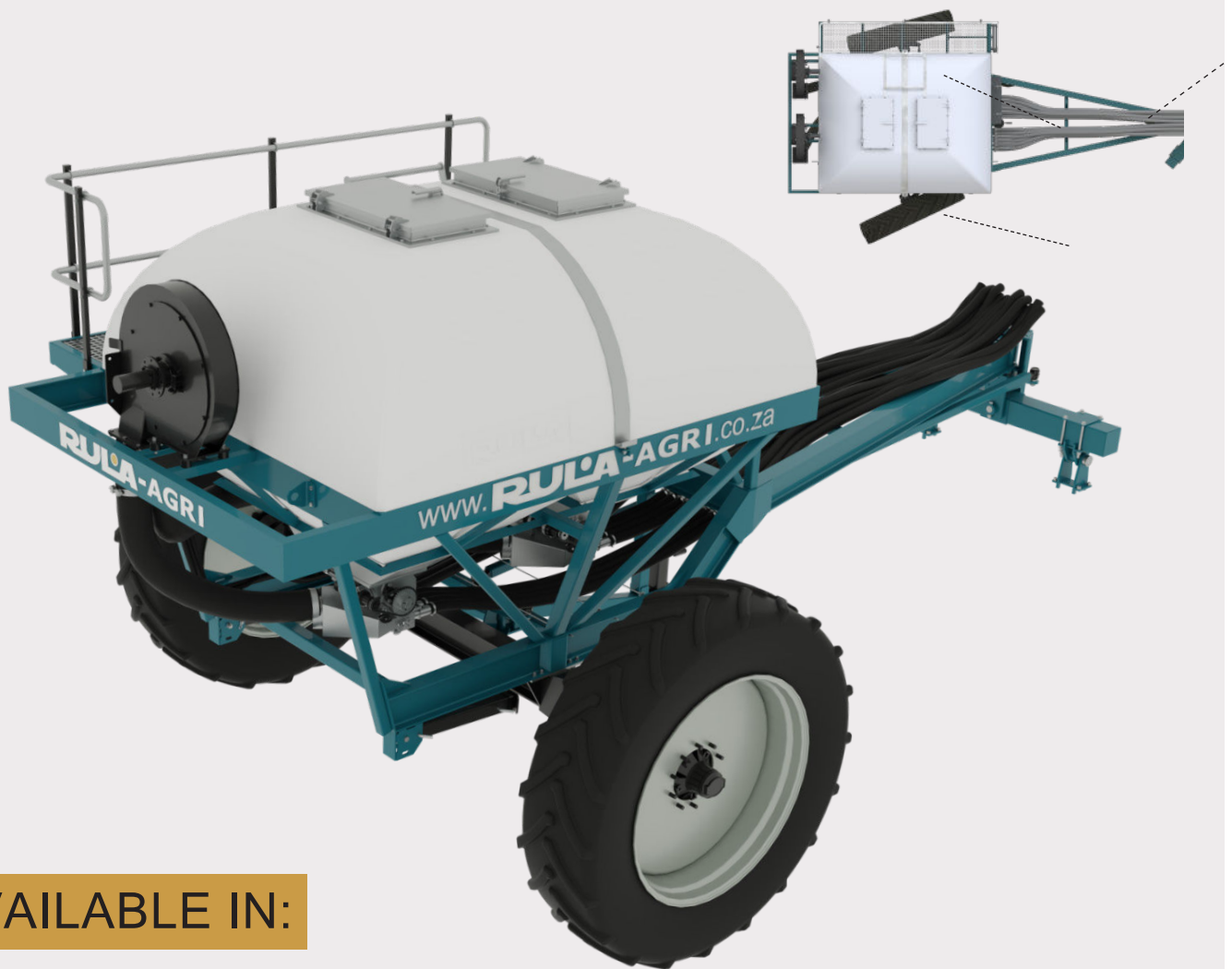


- ① Easy access to platform
- ② 2 x 3500l polyethylene tanks
- ③ Sealable fill hatch
- ④ High output hydraulic driven fan
- ⑤ Müller Elektronik rate control system
- ⑥ 380/90 R42 tyres standard at 3048 mm wheel spacing
- ⑦ Track following steering mechanism

FEATURES

The Fert Trail commodity cart has proven to be extremely accurate, easy to use and precise in following the trail of your tractor. Ideal for pre-planters, planters and strip-till equipment; the carts can also be used for bulk fertiliser or central seeding. The cart is equipped with

a **track following** steering system to aid with sharp turns on headlands, to protect one's crops from damage and to ensure that the trailer does not run in loosely tilled soil. These trailers also offer a wide range of row and spacing setups to ensure a solution for your existing layout.



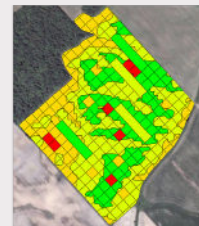
AVAILABLE IN:

Capacity	3.5 ton / 4 ton / 6 ton / 7 ton (3500 x 2)
Rows	8 / 12 / 16 / 24 / 32
Wheel Centers	3048mm / 3656mm

PRECISION READY



Accurate fertiliser control with Müller Elektronik ISOBUS variable rate control system



OPTIONS

The Fert Trail commodity cart is available in various configurations with single or double tank options. These are all available with section control and central seeding options. The Fert Trail can be equipped

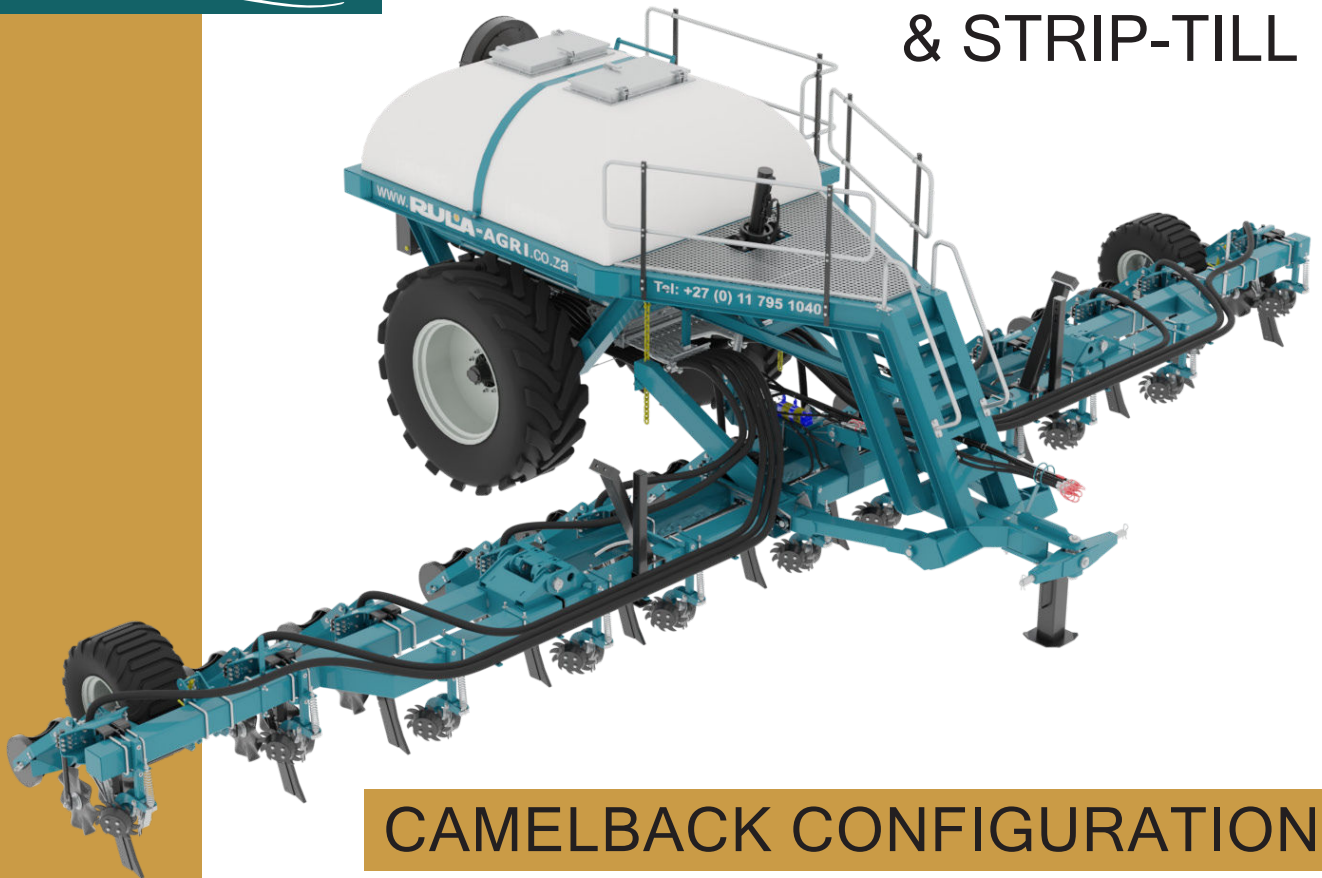
with Rula-Agri's unique granular fertiliser metering system. This system can be driven by either an electric stepper motor or a hydraulic motor, both controlled with the Müller Elektronik rate controller.

ALSO AVAILABLE IN LIQUID FERTILISER AND CENTRAL SEEDING OPTIONS

CONTACT US TODAY!

Fert Max

PRE-PLANTER & STRIP-TILL

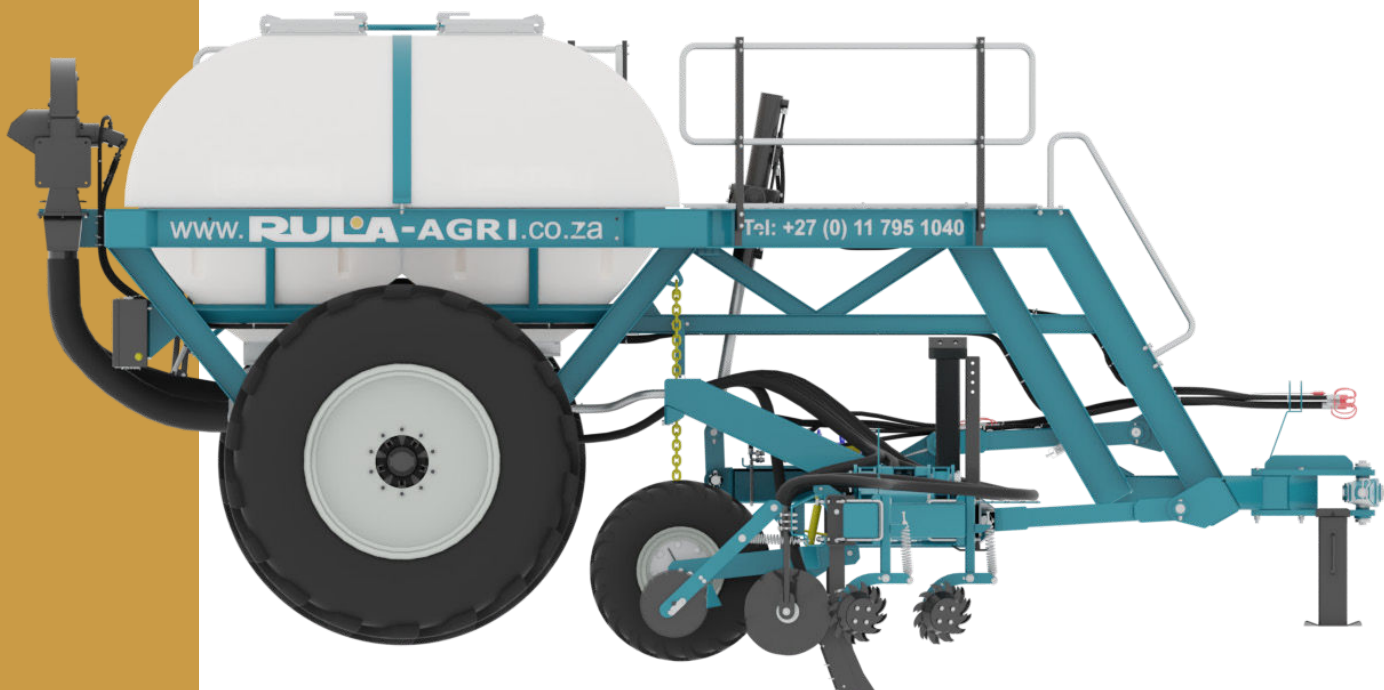


CAMELBACK CONFIGURATION

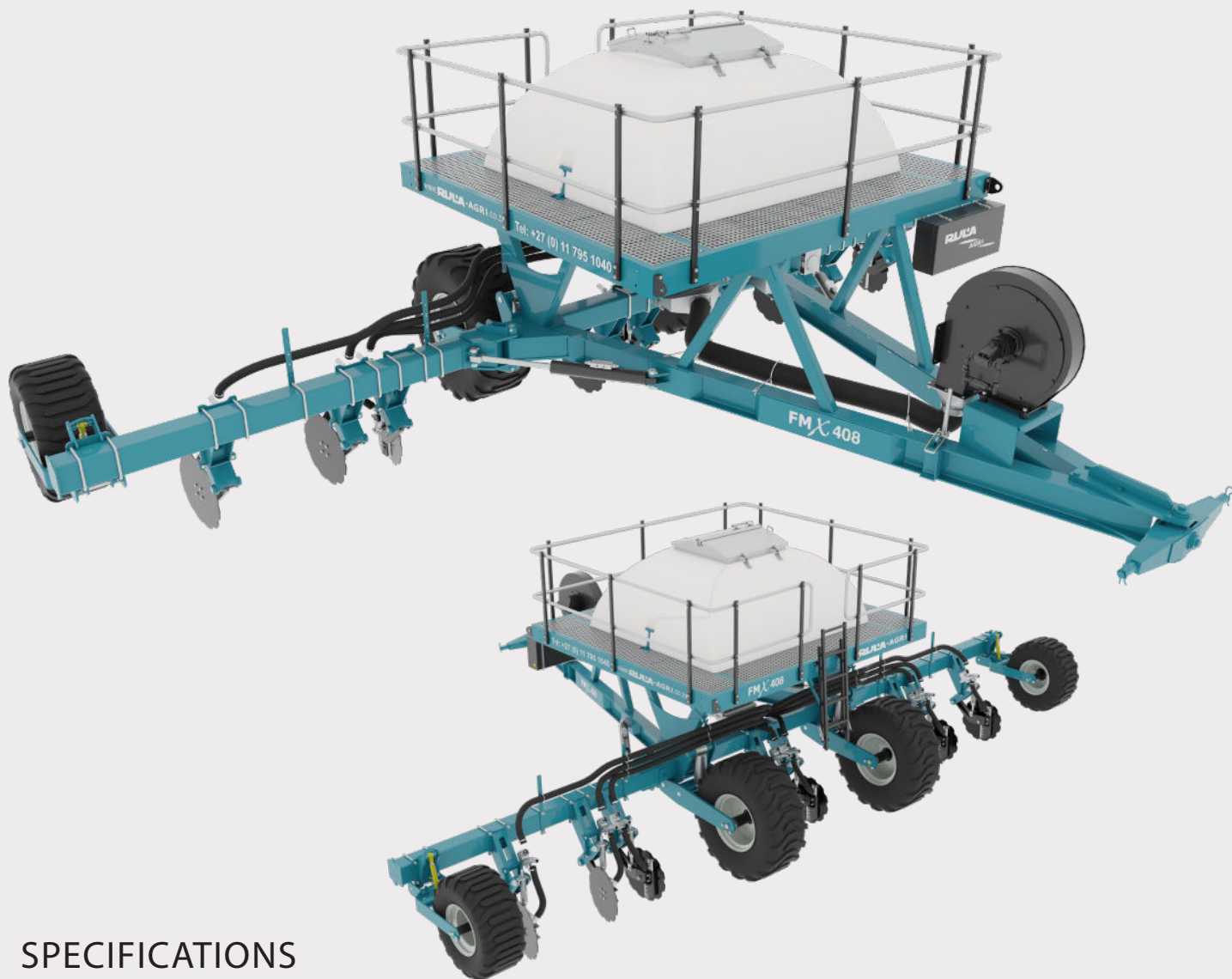
Rula-Agri's Camelback configurations make it the most versatile implement in its class. These configurations can accommodate various planter, pre-planter and strip-till layouts with the added benefit of a compact implement that handles with exceptional ease, both in the field and on the road.

Camelback configurations feature:

- Visibility of all units during operation
- Exceptionally compact turning radius
- An array of possible combinations and capacities
- All the benefits of a 3-point mounted implement minus the stress on the hitch
- Converts into Top-Dress Tool with 800mm ground clearance



TOP-DRESS TOOL



SPECIFICATIONS

Capacity

2 ton / 4 ton / 6 ton / 7 ton (2 x 3.5 ton)

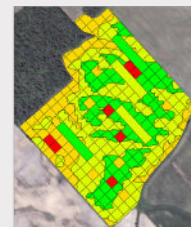
Wheel Centers

± 2200mm / 3656mm

PRECISION READY



Accurate fertiliser control with Müller Elektronik ISOBUS variable rate control system



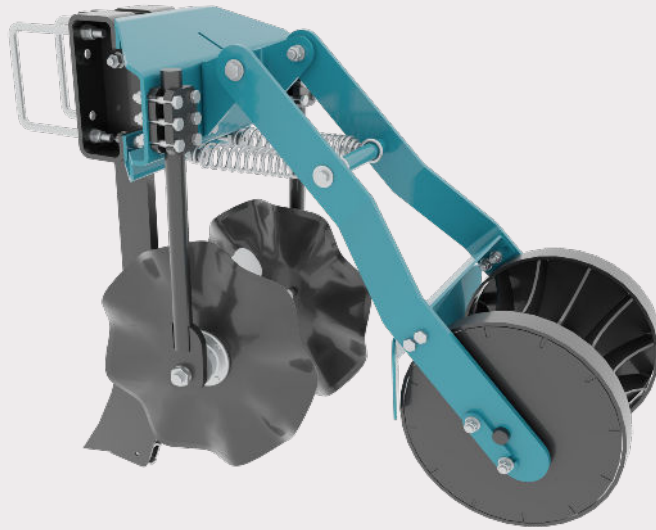
FEATURES

- Visibility of all units during operation
- An array of possible combinations and capacities
- Exceptionally compact turning radius
- Can act as a small Pre-Planter
- Large Diameter lift assist wheels
- Available with various applicator units
- 800mm ground Clearance.

BUILD YOUR STRIP-TILL!

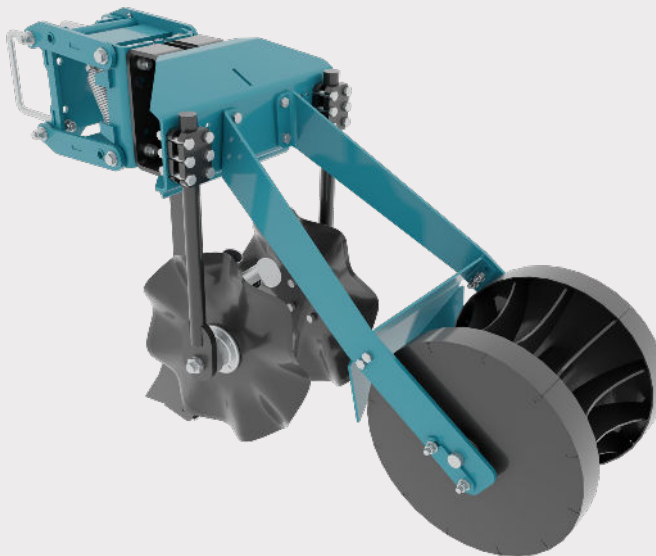
Combine equipment to suit your needs or pick from our standard options.

FAU-008



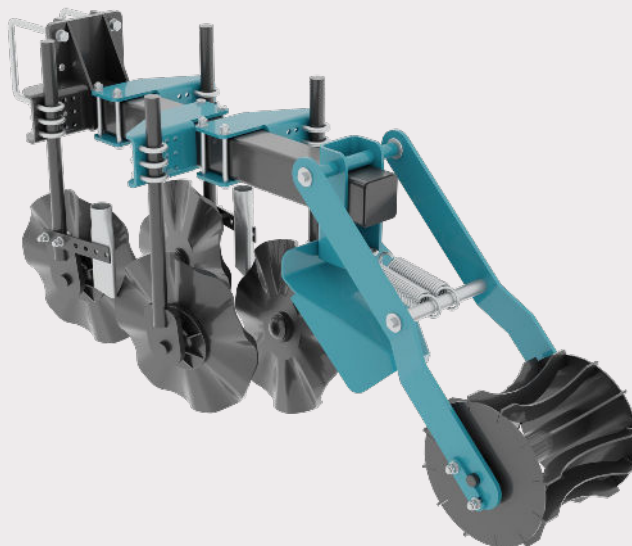
The FAU-008 is ideal for Free State sandy soils. Fertiliser can be placed in 1-3 layers of soil up to 300mm deep. The berm roller leaves a soft seedbed finish that flattens the row for perfect planting.

FAU-009



The FAU-009 is ideal for Free State sandy soils. Fertiliser can be placed in 1-3 layers of soil up to 300mm deep. The berm roller leaves a soft seedbed finish that flattens the row for perfect planting.

FAU-010



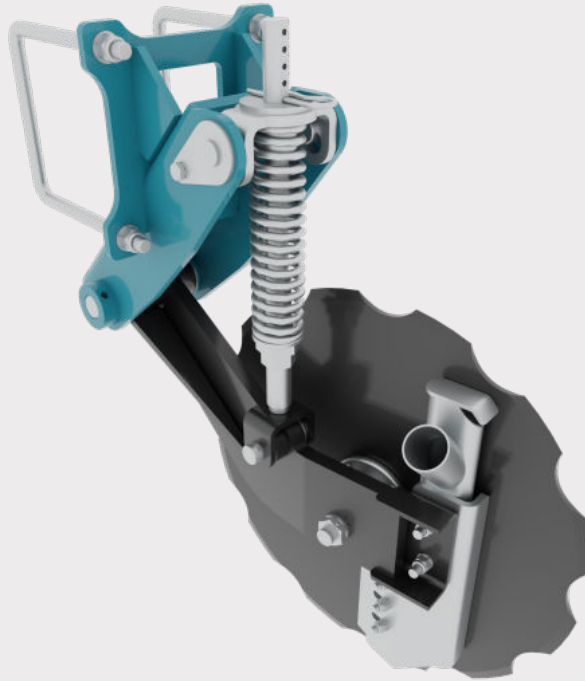
The FAU-010 is perfect for mixing the fertiliser throughout the seed bed.

CONTACT US FOR A COMPLETE LIST OF OPTIONS

BUILD YOUR STRIP-TILL!

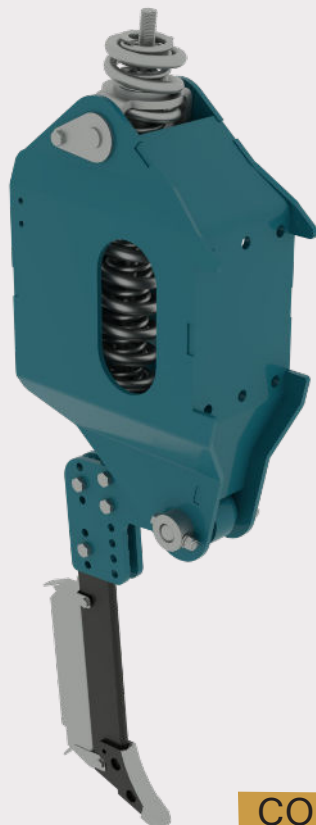
Combine equipment to suit your needs or pick from our standard options.

COL-560



The COL-560 is ideal for quick and easy fertiliser top-dress application. Fertiliser is placed behind the Ø560mm coulters up to 120mm deep. Ideal for lower kW tractors.

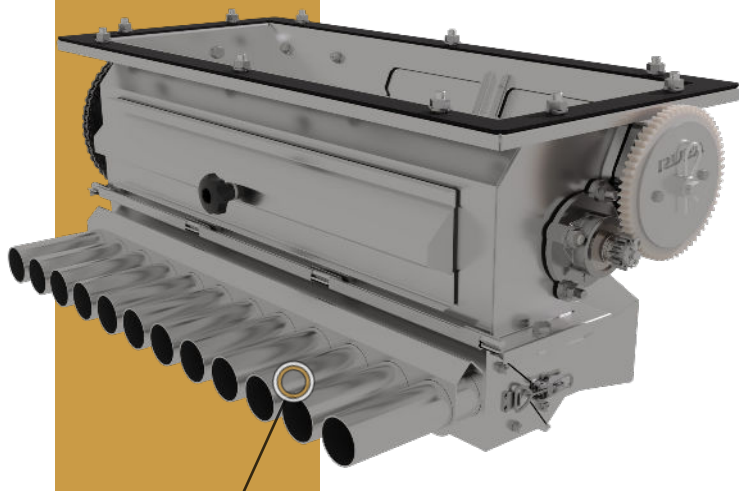
STT-200



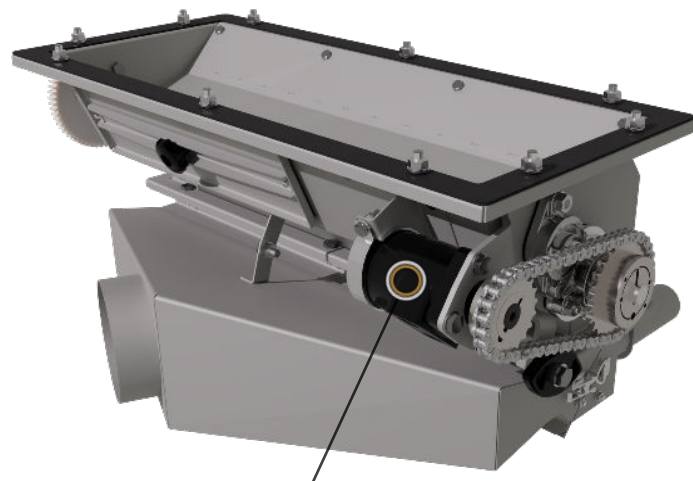
The STT-200 is an ideal trip-tine for No-till application. The fertiliser is placed 100-150mm deep.

CONTACT US FOR A COMPLETE LIST OF OPTIONS

FERTILISER METERING UNITS



Individual row measurement



Electric stepper motor or hydraulic motor drive

FEATURES

- Rula-Agri's latest generation of technologically advanced granular fertiliser metering systems provide unparalleled precision.
- An engineered venturi system reduces overall energy requirements.
- Cupped rollers ensure that fertiliser is not damaged during loadout minimising the possibility of system blockages, both in the unit and downstream.

SECTION CONTROL



4 Row Section control metering units

FEATURES

- The new generation metering units offer section control capabilities.
- Fertiliser application can be switched off by three or four row sections depending on your configuration.
- Two fertiliser products can be mixed by incorporating a multi box system.

Precise fertiliser control with Müller Elektronik ISOBUS rate control system

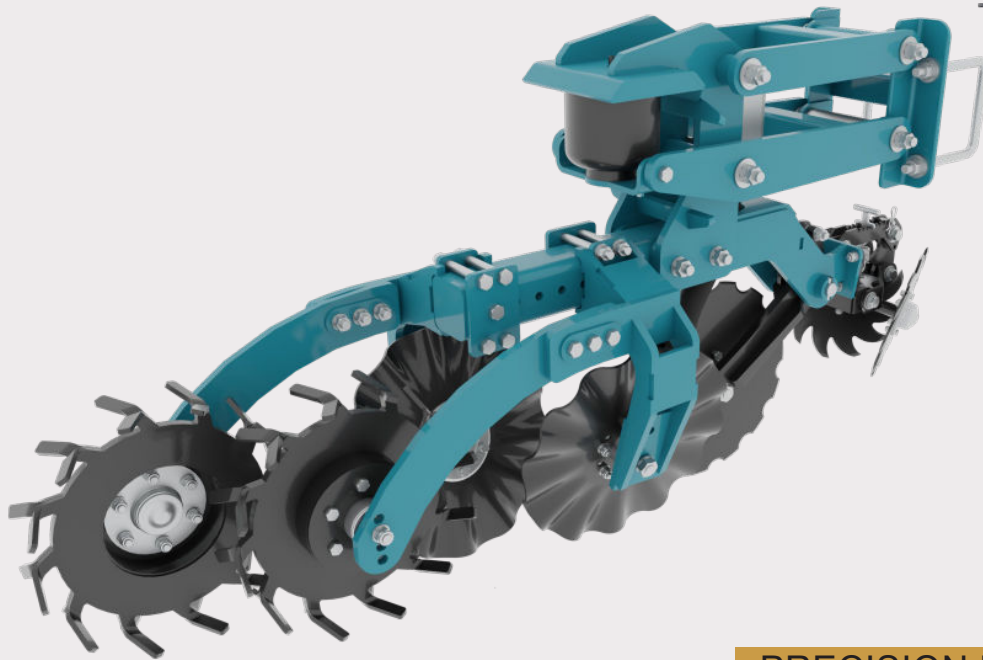
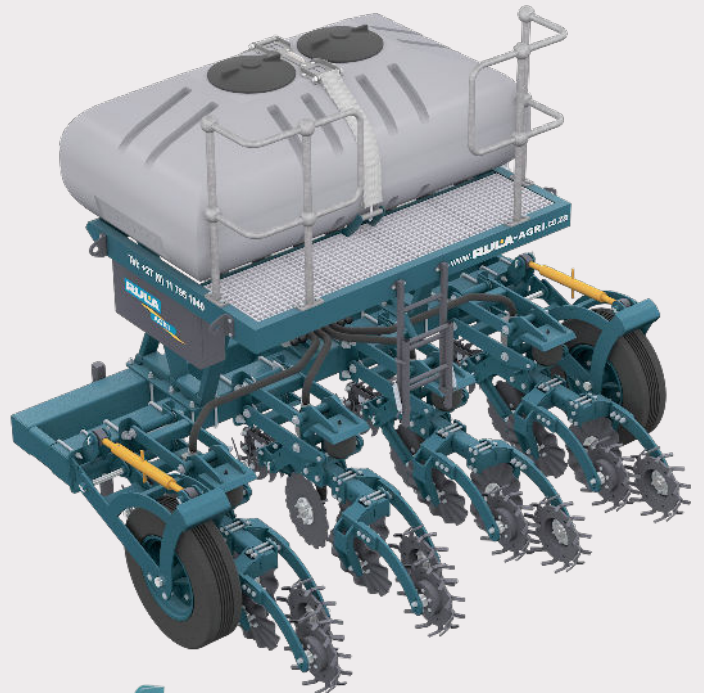


FEATURES

Rula-Agri's strip-till equipment offers the solution to all types of soil. Our engineers have compiled configurations to till and condition your soil exactly to your needs. Our modular units enable a vast amount of configurations to ensure every client's requirements are met. Unit weight, pneumatic and hydraulic downforce are all options that can be built into each configuration to ensure soil penetration whilst various means of fertiliser application units ensure that you can place your fertiliser exactly where your plant needs it.

OPTIONS INCLUDE

- Cutting coulters
- Fertiliser coulters
- Up- and downforce on row cleaners
- Fixed and floating row cleaners
- Shear-bolt and trip tine applicators
- Adjustable wavy or dish closing coulters
- Light or heavy duty frame
- Single or double closing wheels
- Berm generator (basket wheel)
- And many more

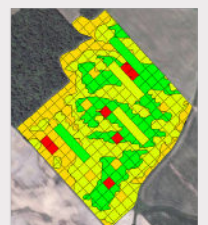


CONTACT US
FOR YOUR STRIP-
TILL LAYOUT
REQUIREMENTS

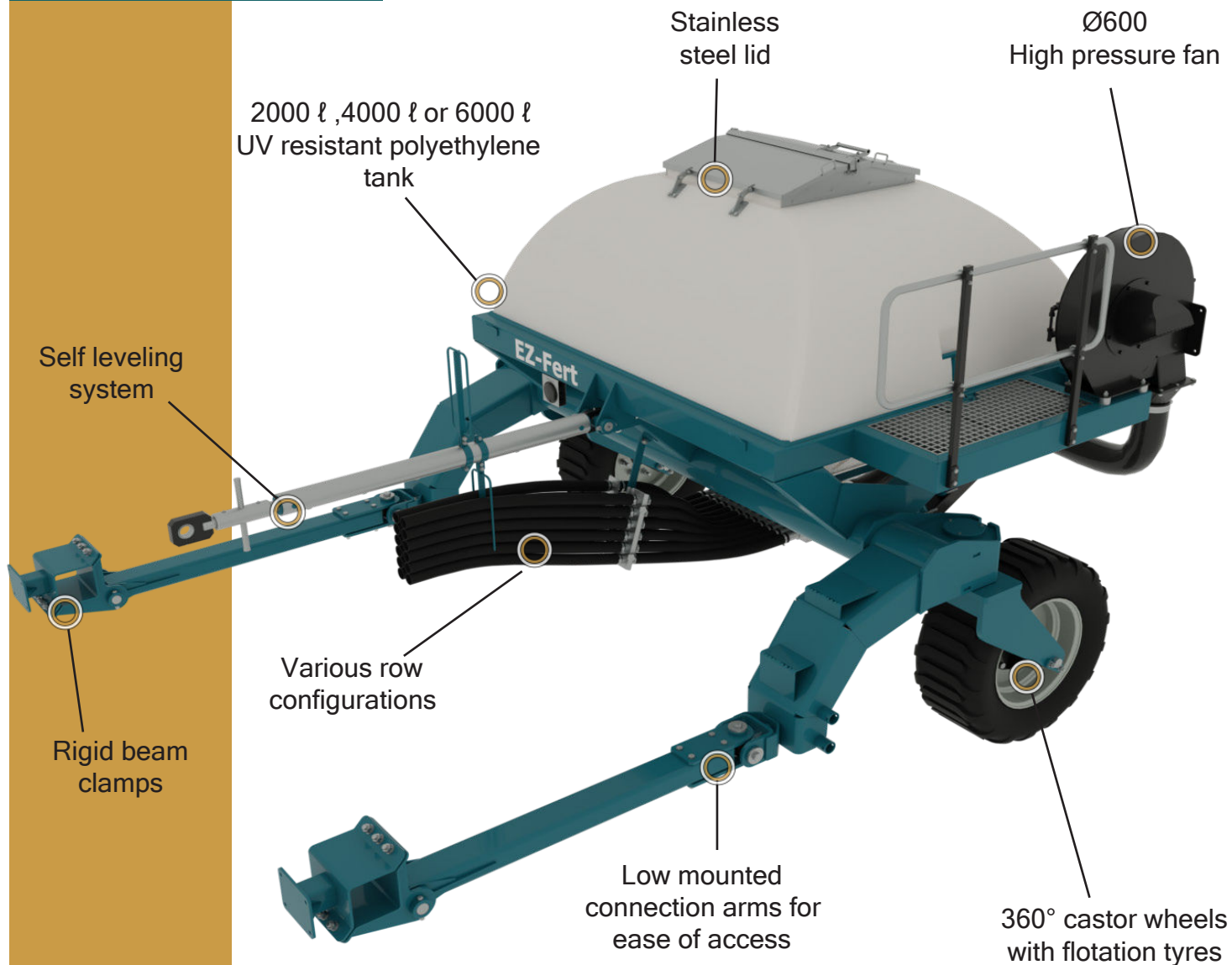
PRECISION READY



Accurate fertiliser control with
Müller Elektronik ISOBUS
variable rate control system



EZ-Fert



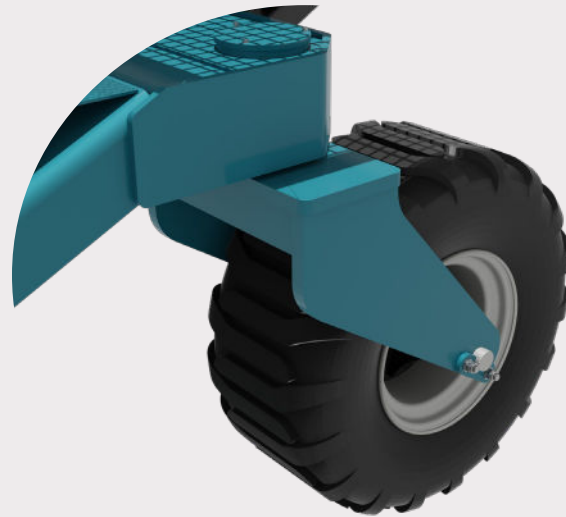
FEATURES

The new Rula-Agri EZ-Fert optimises the efficiency of your planting or strip-till operation with a simplistic yet ergonomic design.

- Durable and compact flotation castor wheels allow for a small turning radius in all soil types.
- A built-in self leveling system makes the expensive hydraulic lift assist wheels unnecessary.
- A wide variety of metering unit options available.
- Can be equipped with either Müller electric drive or existing hydraulic drive control systems.
- The ergonomic design allows easy and open access to row units during a refill or maintenance operation.

CONTACT US
TODAY!

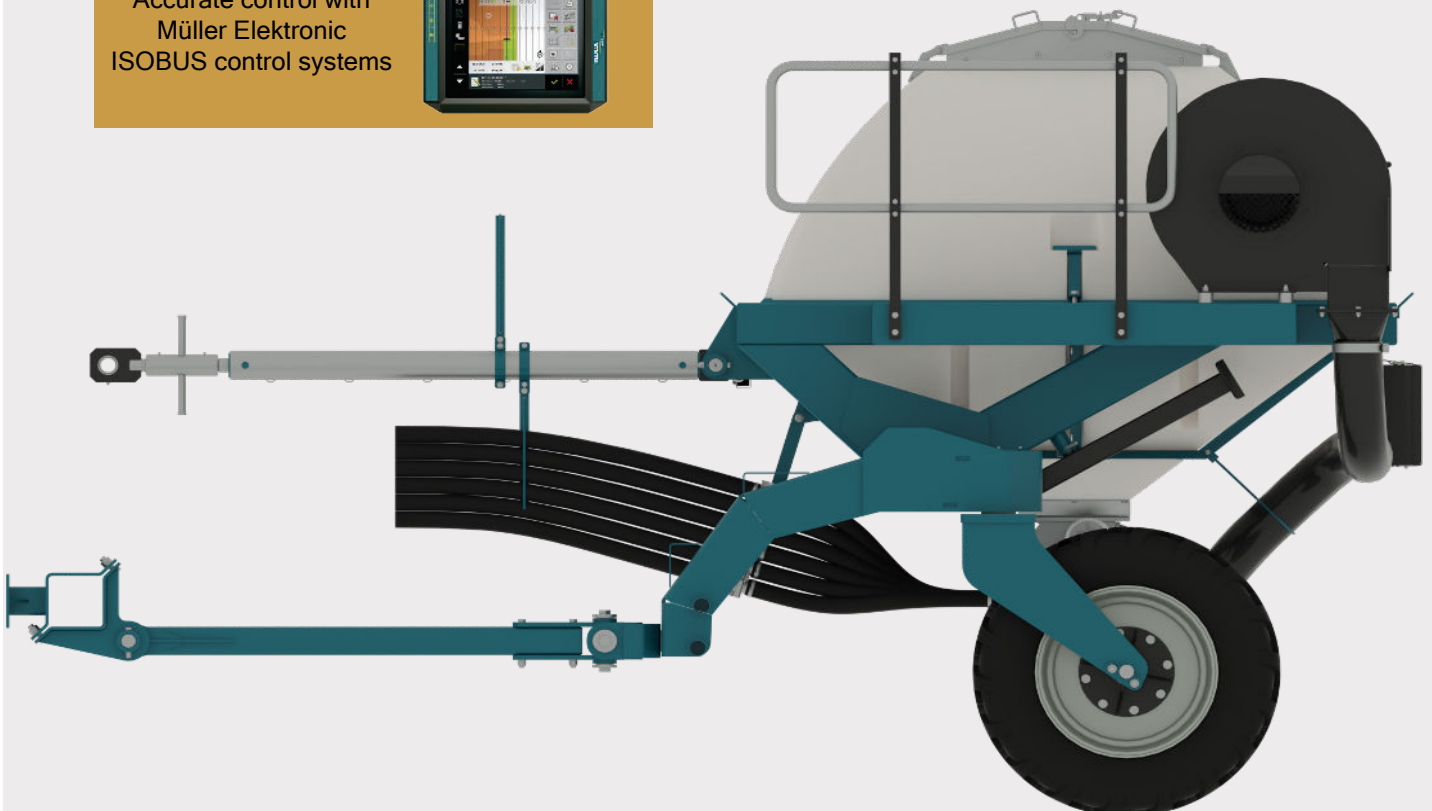
CASTOR FLOTATION WHEELS



The use of Rula-Agri's self developed leveling system eliminates the need for expensive lift assist mechanics and hydraulics. This allows the castor wheel system to be simple and light, ensuring maximum flotation in sandy soils. It is

also a compact system leaving more room to access the metering unit and its corresponding parts. The low mounted connection arms enable easy access to the planter or strip-till units to minimise downtime during repairs or refills.

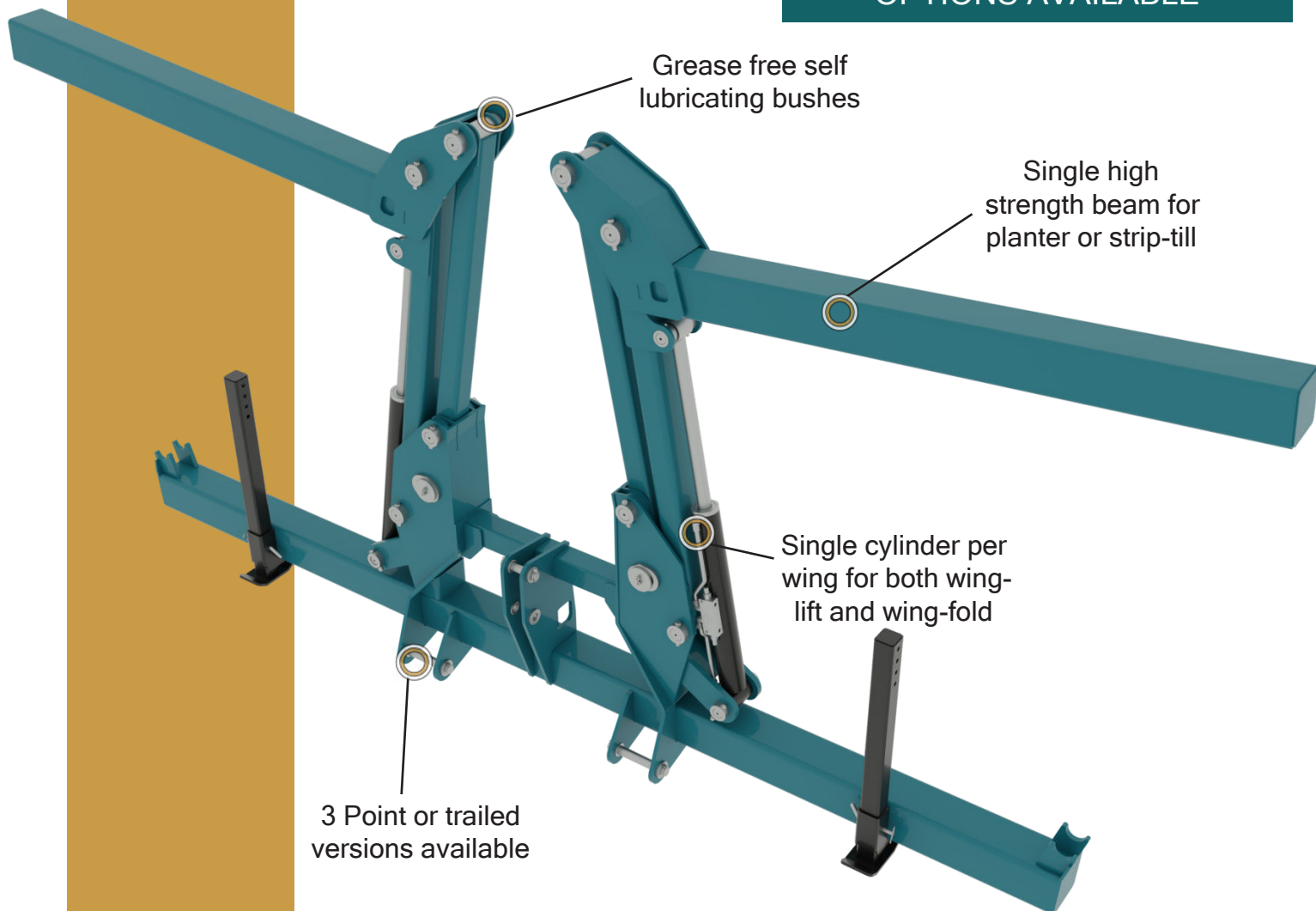
Accurate control with
Müller Elektronik
ISOBUS control systems



ALSO AVAILABLE IN LIQUID FERTILISER AND
CENTRAL SEEDING OPTIONS

Stack-Fold_{Single}

VARIOUS FERTILISER LAYOUT
OPTIONS AVAILABLE



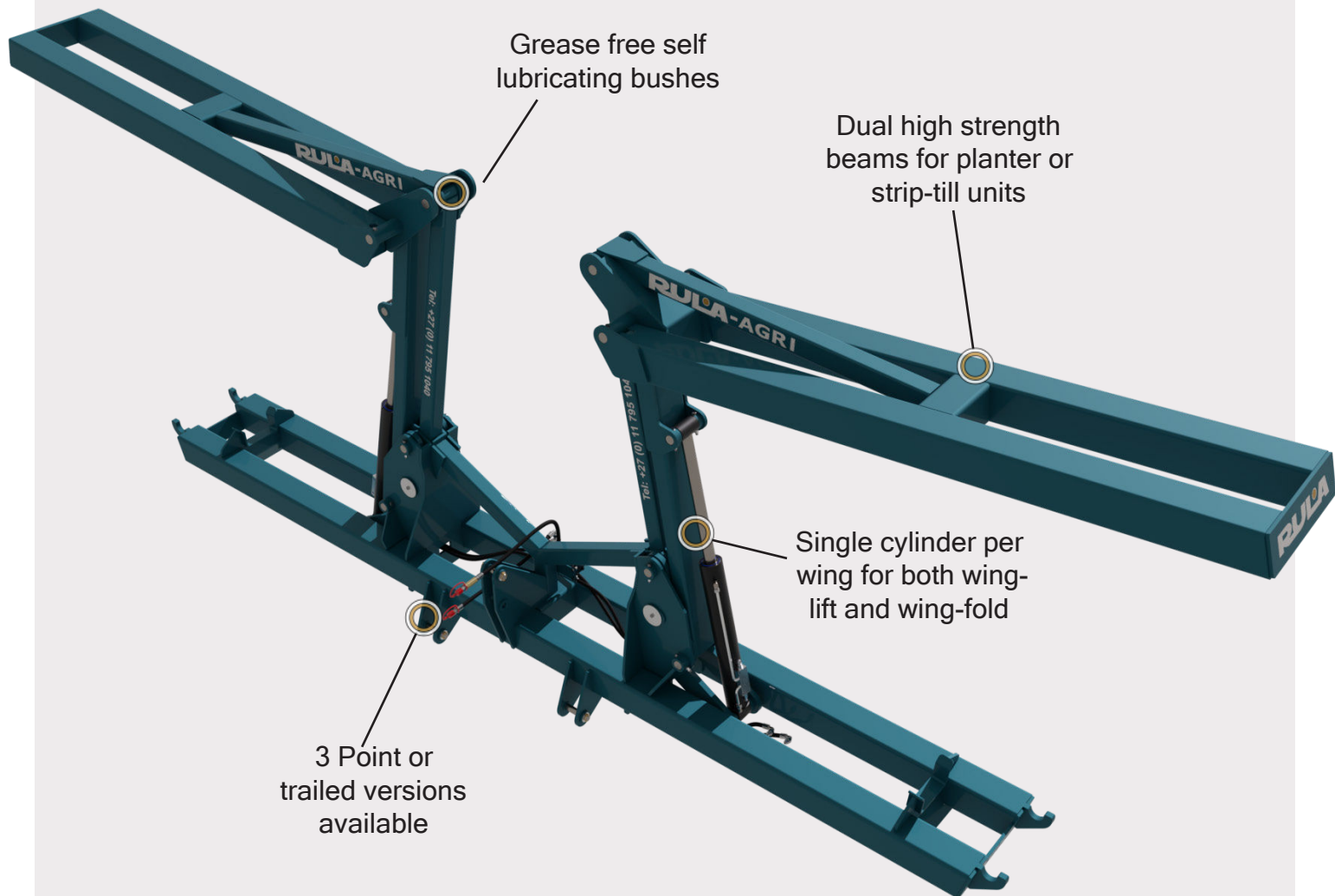
ENQUIRE TODAY

FEATURES

The new Rula-Agri single beam stack-fold frame makes Rula-Agri one of the most diverse suppliers of locally manufactured equipment.

- High strength steel beams allow it to be used for both planter and strip-till units.
- The grease free bushes in the hinges are evidence of Rula-Agri's focus to produce implements that are optimally designed for efficiency in your farming process.
- With a maximum of 12 units, the single stack-fold can cover most Planter layouts.
- The optional flow divider enables precise control and equal lift of both wings simultaneously.
- Available in both 3 point and trailed versions.

CONTACT US
TODAY!



VARIOUS FERTILISER LAYOUT
OPTIONS AVAILABLE

FEATURES

The new Rula-Agri double beam stack-fold focuses on heavier and larger strip-till processes as well as no-till planting setups.

- The dual high strength beams can be custom spaced to fit your Strip-till or no-till setup.
- A maximum of 16 units make for an effective solution for most strip-till and no-till setups.
- The single cylinder per wing covers both wing-lift and wing-fold ensuring the frame is as energy efficient as possible, leaving more hydraulic ports open for other systems.
- The optional flow divider enables precise control and equal lift of both wings simultaneously.

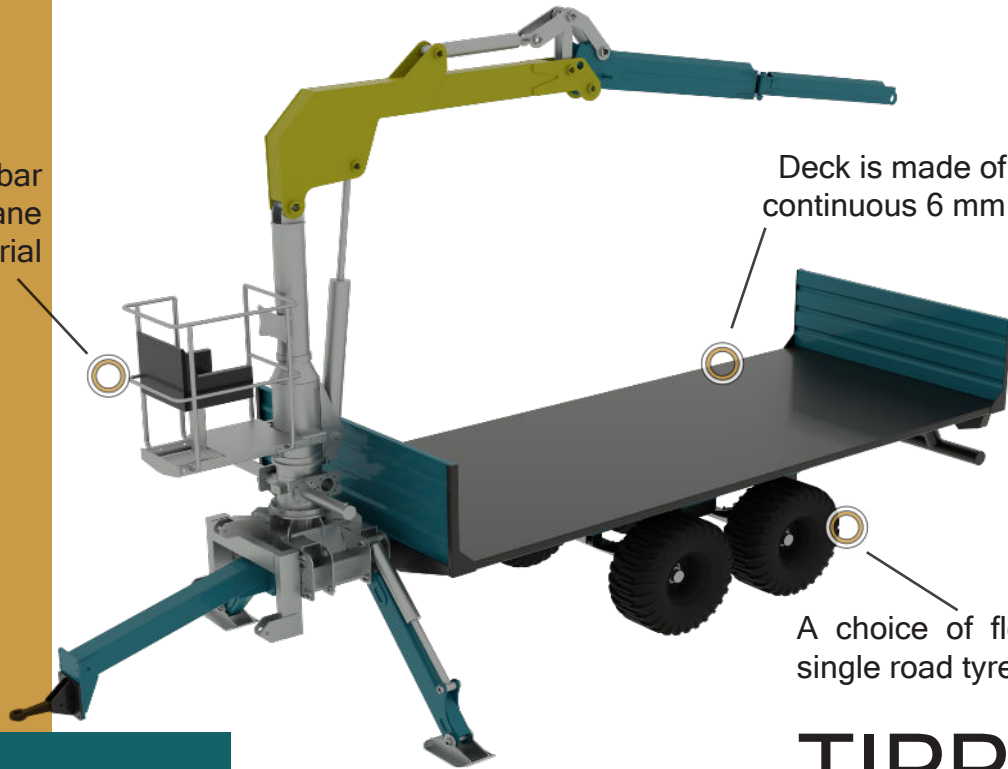
T1200 Trailer

FLAT DECK TRAILER

FEATURES

To complete the material handling cycle Rula-Agri offers a heavy duty 12 ton flat deck trailer with a double axle bogie. The double axle bogie makes turning and reversing much easier compared to turntable trailers.

Optional drawbar mounted crane for bulk material



Deck is made of one continuous 6 mm plate

A choice of flotation or super single road tyres

T500 Tipper

TIPPER TRAILER

FEATURES

The 8 ton tipper trailer is a versatile and robust solution for all your mixed load transport needs. With a 5 m³ capacity the trailer ensures transport times are kept to a minimum.

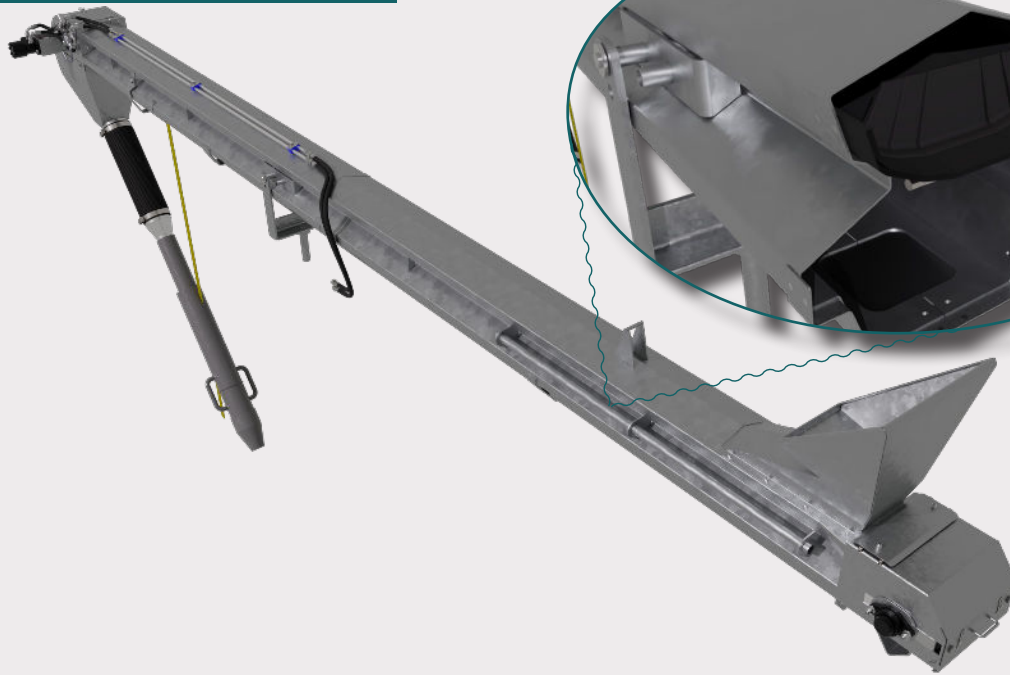
Automatic opening and closing tail gate



A choice of flotation or super single road tyres.

LOADOUT UNITS

300 mm Cleated Conveyor



300 mm Cleated Conveyor

200 mm Screw Auger

Capacity:

55 t/hr

25 t/hr

Length options:

6.5 and 7m

7m

Suitable for:

Seed and Fertiliser

Fertiliser

Material options:

Galvanised or Stainless Steel

Galvanised

Control:

Hydraulic

Hydraulic

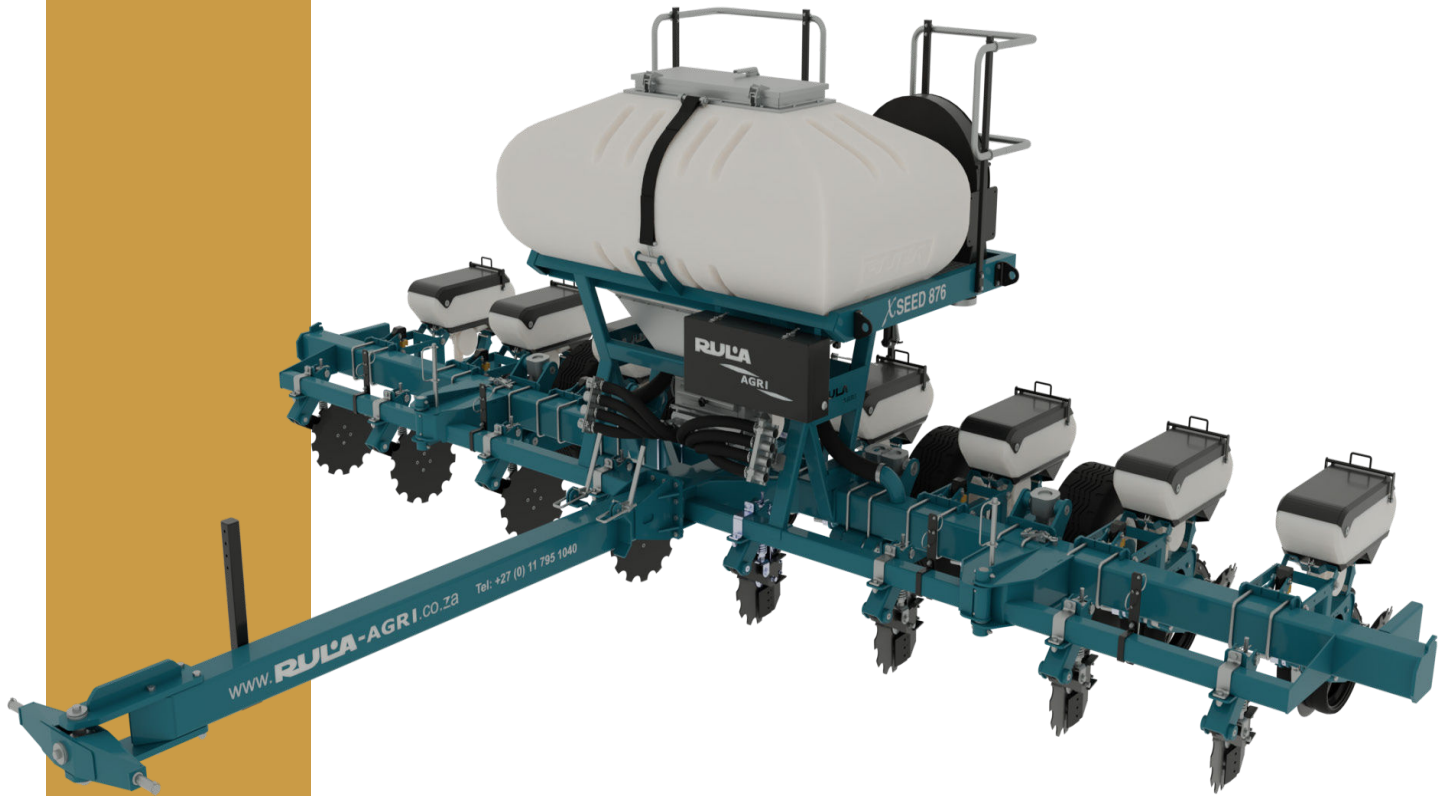
ENQUIRE ABOUT OUR SEED AUGER

200 mm Screw Auger



X-Seed

PRECISION PLANTERS



FEATURES

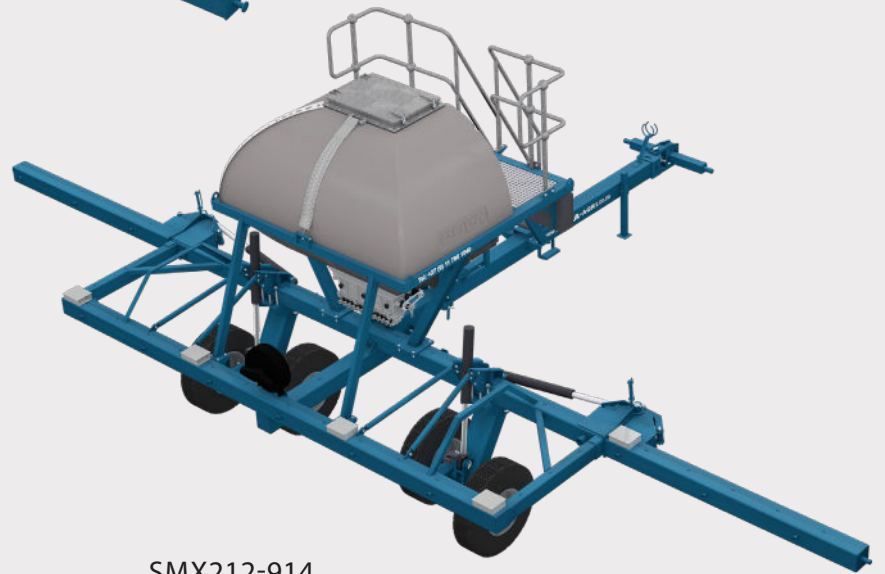
The Rula-Agri Seed Max planter series is both functional and precise. The same principles of durability and precision used throughout our range are implemented on both the conventional and no-till planter series. A planter capable of combatting the harshest of conditions requires not only world class engineering but an extensive understanding of the vast array of factors that affect the growth of your plant; from placement, to germination, to harvesting.

CONTACT US
TODAY!

A COMPLETE PLANTER,
LOCALLY MANUFACTURED



XSD-089.0



SMX212-914

SPECIFICATIONS

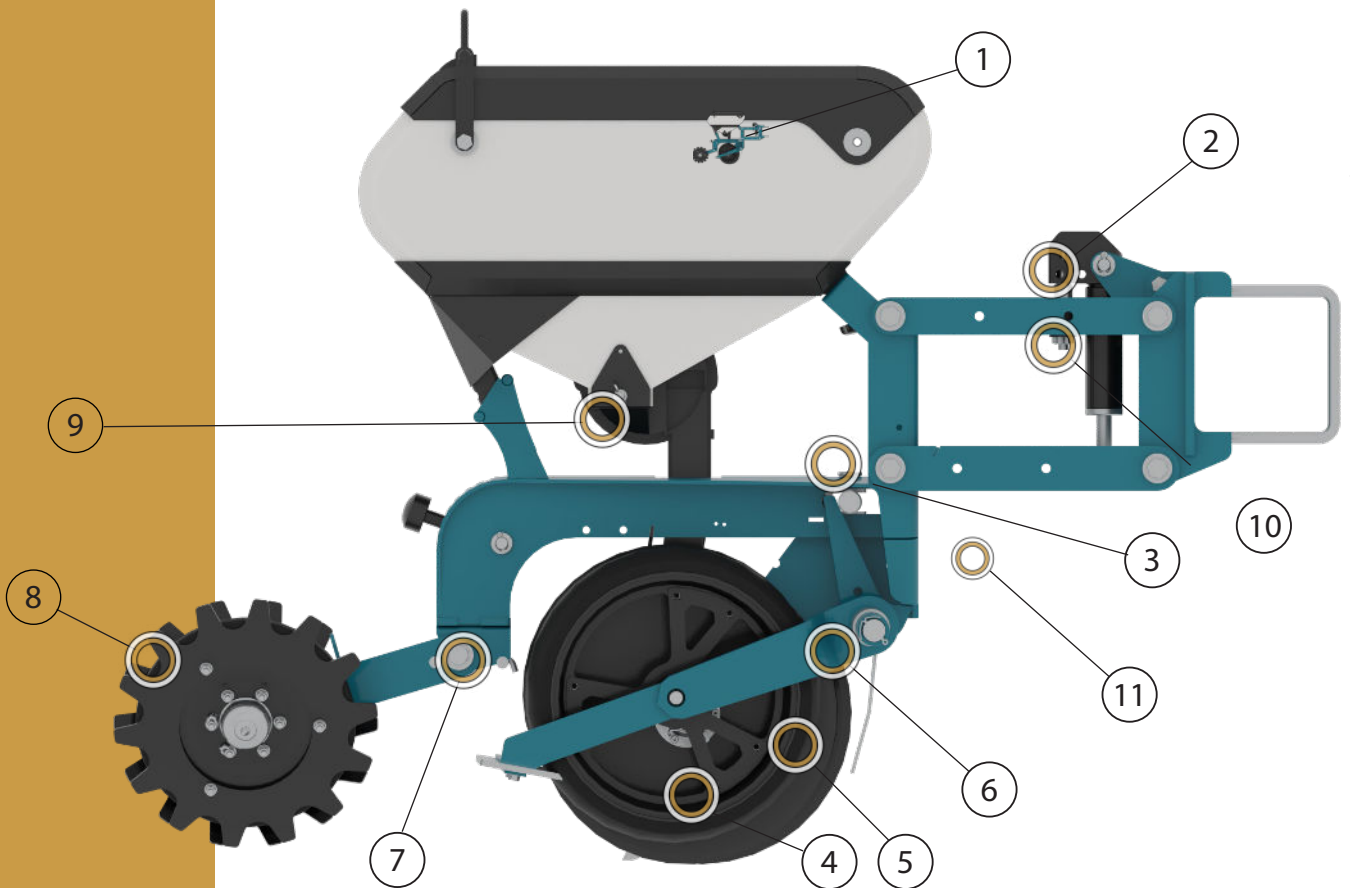
Model	Row Spacing	Number of Rows	Tank Capacity	kW Required
Seed Max 100 - Single Beam front fold				
SMX106	762/914	6	2000 ℓ	72
SMX108	762/914	8	2000 ℓ	96
SMX110	762/914	10	2000 ℓ	120
SMX112	762/914	12	2000 ℓ	144
Seed Max 200 - Stand off beam front fold				
SMX208	762/914	8	3500 ℓ	96
SMX210	762/914	10	3500 ℓ	120
SMX212	762/914	12	3500 ℓ	144
SMX216	762	16	3500 ℓ	190
SMX220	508	20	3500 ℓ	200
Seed Max 300 - Triple beam front fold (No-till)				
SMX308	762/914	8	3500 ℓ	120
SMX312	762/914	12	3500 ℓ	180

WHAT'S NEW

The all new Rula-Agri X-Seed planter unit takes rugged performance and durability to the next level. Precision, repeatability and reliability form the core of the X-Seed unit. Everything else just looks good on paper.

FEATURES

- ① 70 l seed hopper
- ② Heavy duty parallel link
- ③ Easily adjustable depth settings
- ④ Trailing and individually rocking gauge wheels
- ⑤ Leading edge Ø16" seed discs
- ⑥ Seed disc screen
- ⑦ Multiple optional mud scrapers
- ⑧ A wide variety of closing wheel options
- ⑨ Precision Planting vSet 2 seed meter with Müller drive
- ⑩ Various downforce options
- ⑪ Multiple row mounted attachments

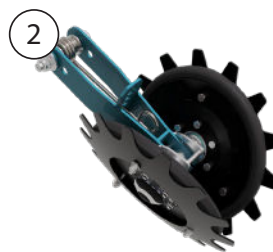


CUSTOMISE YOUR X-SEED UNIT TO SUIT YOUR OPERATION

These options and many more!



Finger type closing wheel



No-till V-press wheel with discs



Closing disc system

CONTACT US
TODAY!

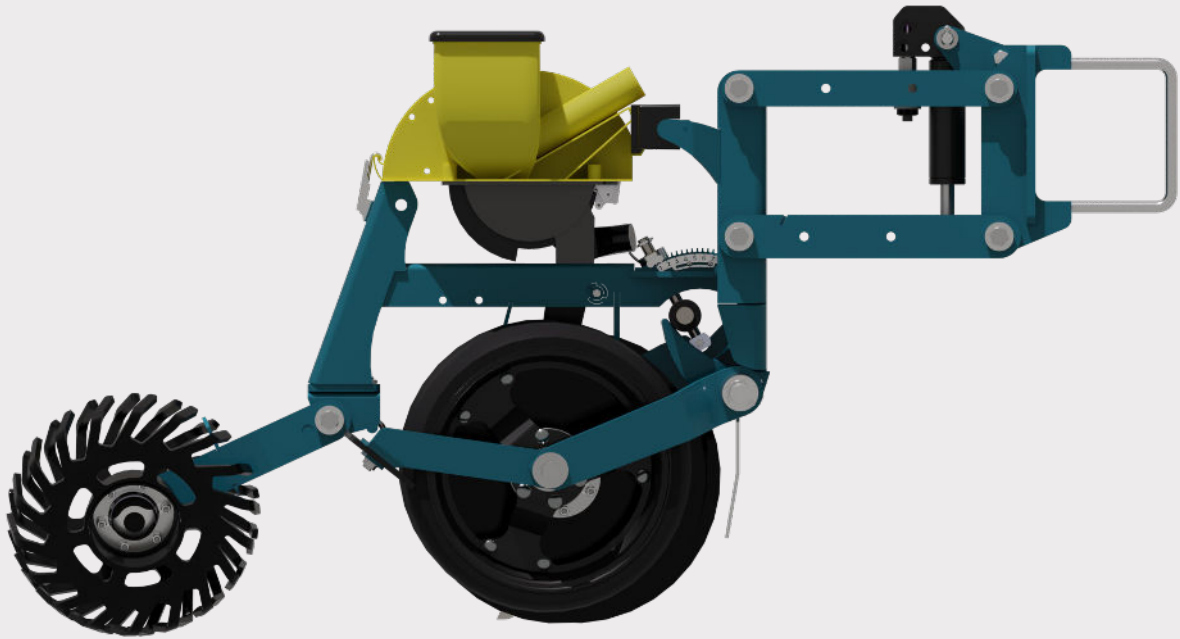
The X-Seed row units are equipped with Precision Planting vSet 2 seed meters driven by a Müller Elektronik stepper motor drive for precise seed

metering. The unit can be equipped with a 70 l seed hopper or with the Precision Planting mini seed hopper used with the **Rula-Agri central seeding** system.

Accurate planter control with Müller Elektronik ISOBUS planter control system



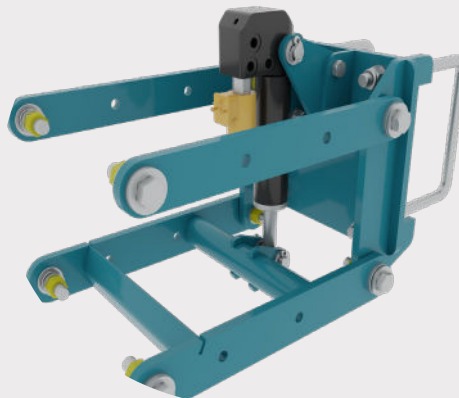
X-SEED WITH CENTRAL SEEDING



FEATURES



Ultra durable hub, with off-the-shelf bearings



Optional mechanical, pneumatic or hydraulic downforce



Rocking system with easily adjustable planting depth and recalibration function

CONTACT US FOR YOUR SPECIFIC LAYOUT

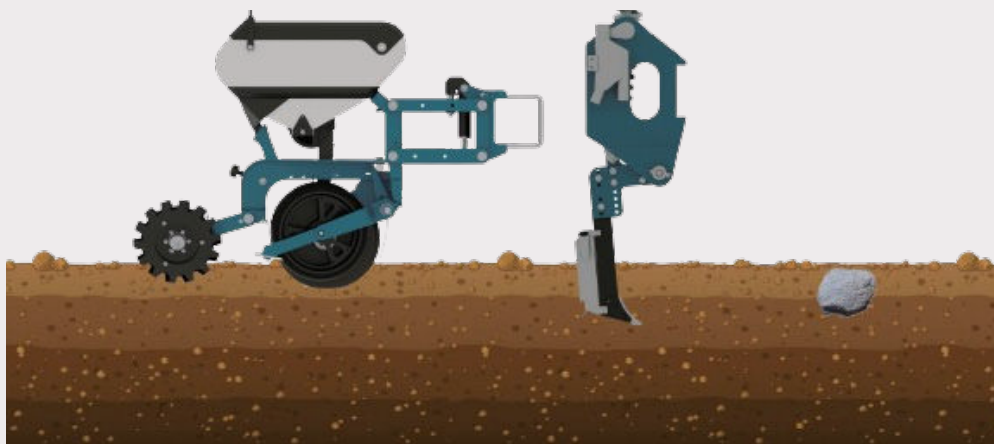
FEATURES

Rula-Agri offers a wide variety of no-till equipment configurations. Trash coulters to break the soil crust and simultaneously part plant residue; fixed or floating row cleaners to clear parted stubble; a wide variety of closing wheels to ensure the perfect finish for all types of soil. Fixed or trip tines till the soil and

places fertiliser up to 200 mm deep or on three different levels simultaneously. The tines can be equipped with narrow knife points for minimal soil disturbance or with wider break points to loosen soil below the surface. The configurations are endless.

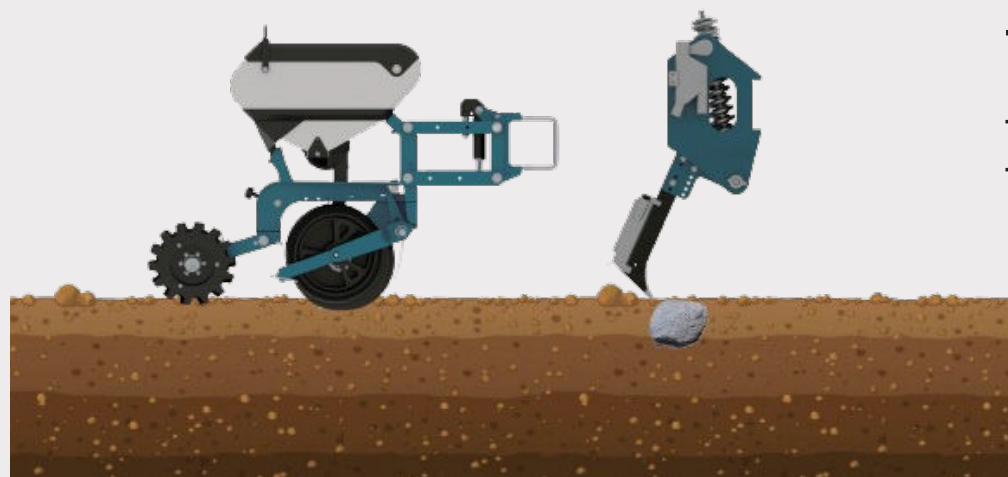
Configure your layout today.

NO-TILL TRIP ACTION



COULTER

- 120 mm working depth.
- 250 kg trip force

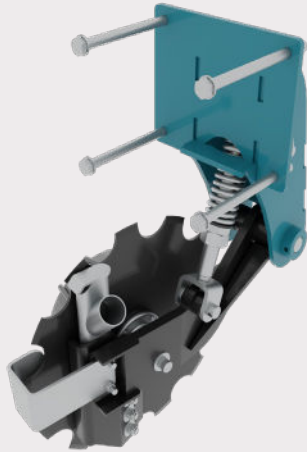


TRIP TINE

- 200 mm working depth.
- 350 kg trip force

CONTACT US FOR ALL AVAILABLE
NO-TILL CONFIGURATIONS

CONVENTIONAL TILLAGE

SINGLE FERTILISER
COULTER

Accurate fertiliser placement with the new Rula-Agri single fertiliser coulters. The coulters are equipped with a gauge wheel for constant fertiliser placement depth.

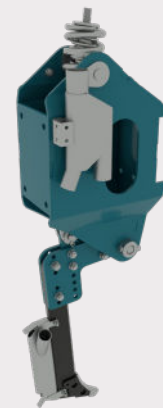
ROW CLEANER



Effective residue management with the new Rula-Agri row cleaner. Available in fixed or floating versions with up- and downforce features.

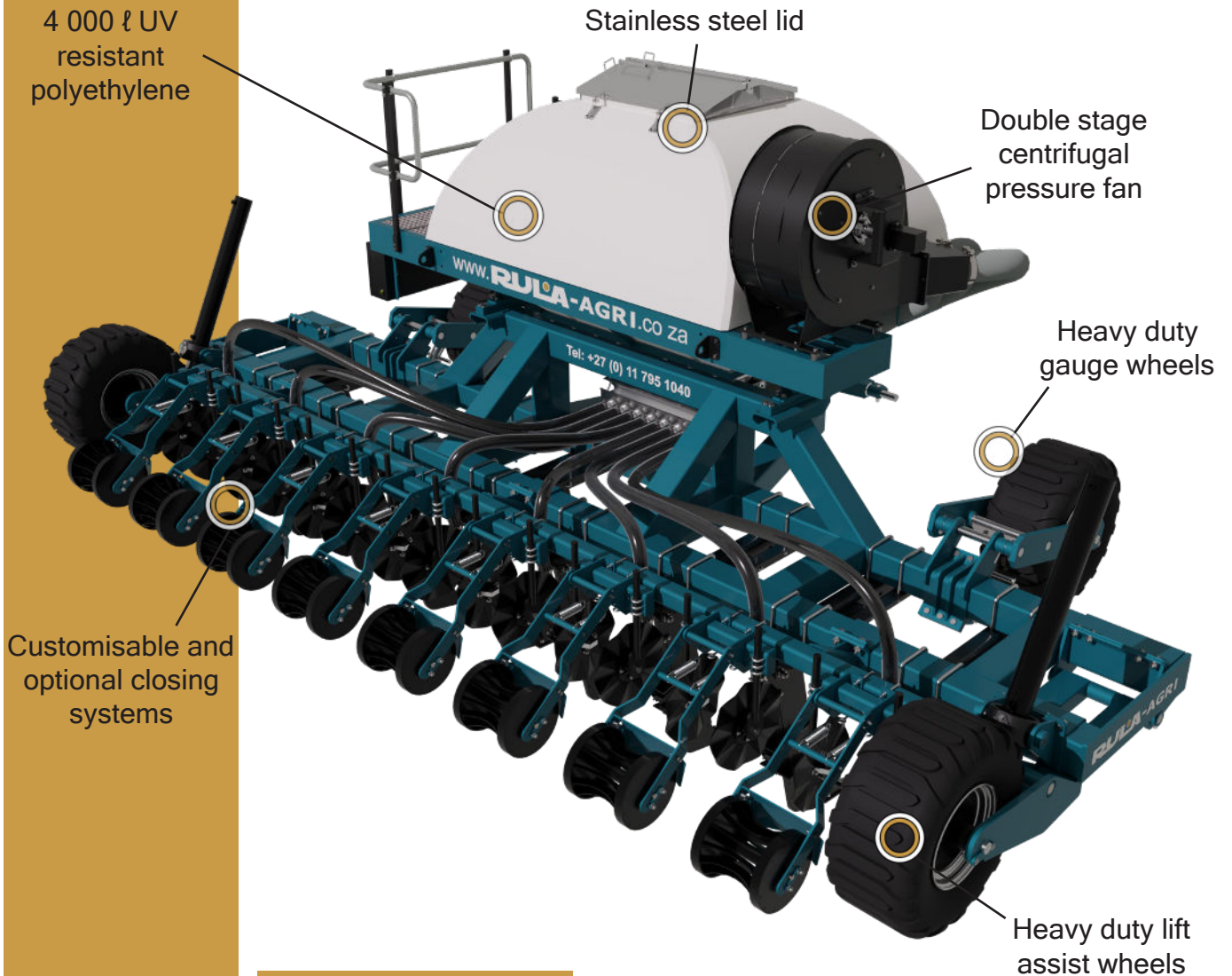
NO-TILL ATTACHMENTS

NO-TILL TRASH COULTER AND TINE



The full no-till package. Rula-Agri's no-till options ensure that you can define the layout that suits your needs. With endless options and configurations you can build exactly what your field requires.

IF NO TWO FIELDS ARE THE SAME,
WHY SHOULD THEIR EQUIPMENT BE?



FEATURES

The new mounted lime ripper from Rula-Agri is ideal for addressing acidity in soil, especially under irrigation pivots where manoeuvrability is key.

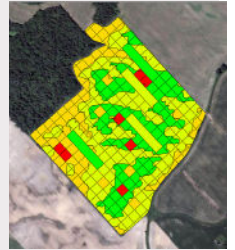
- Can be used for the application of lime or fertiliser at various depths.
- Durable and compact flotation lift assist wheels carry 60% of the implements weight to ensure longevity of your tractor's hitch.
- The standard hydraulic system is upgradeable to a full precision system that incorporates prescription maps.
- A wide variety of tine and closing system options are available.
- An optional addition of load cells to monitor the live weight of lime or fertiliser is available.

CONTACT US
TODAY!

PRECISION READY



Condition soil according to prescription maps with Müller Electronic ISOBUS rate controller

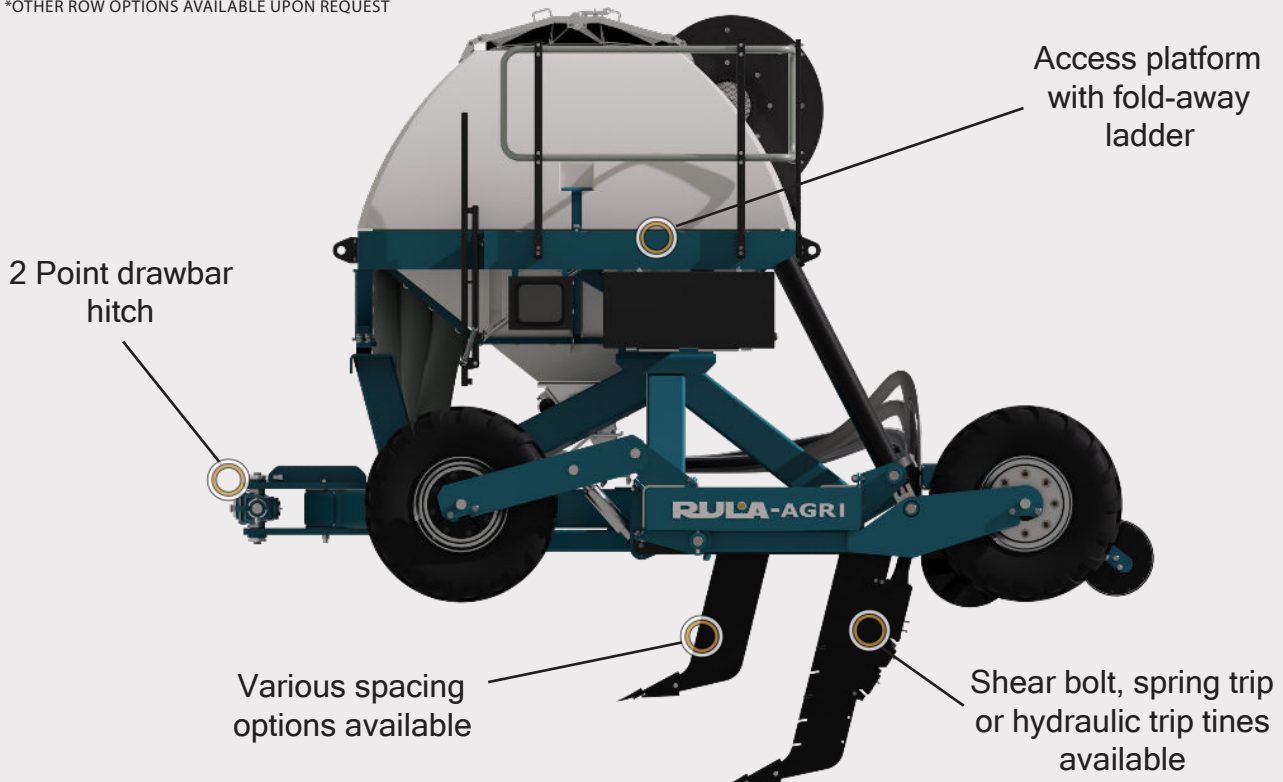


CHOOSE YOUR MODEL

MODEL	BIN CAPACITY	NUMBER OF TINES	TINE SPACING	WORKING DEPTH
RIP MAX MOUNTED RIPPER				
LMR	4 M ³	6/8/10/12	762/914	300-900
RIP MAX RIPPER WITH TOW BEHIND CART				
THL	8 M ³	6/8/10/12	762/914	300-900
RIP MAX RIPPER WITH TOW BETWEEN CART				
TTL	8 M ³	6/8/10/12	762/914	300-900

*OTHER ROW OPTIONS AVAILABLE UPON REQUEST

LIME
OR
FERTILISER



VARIOUS TINE TYPES AND WORKING DEPTHS AVAILABLE

COMBAT ACID BUILD-UP IN SOIL

Acid build-up in soil is a growing concern to farmers worldwide. It has a detrimental effect on your crop's yield and the general health of your soil. Rula-Agri developed a solution for soil treatment where lime or gypsum can now be precisely placed between 100 & 900 mm deep. The solution consists of a towable trailer with a metering and pneumatic conveying system which transfers lime, gypsum or other particulate material to the specially developed

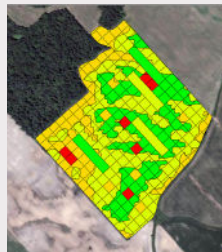
applying tines. The applicator tines mix the particles thoroughly into the soil to ensure a band of soil treated with lime or gypsum. Unlike a moldboard plow, the applicator tines don't turn the soil over leading to loss of moisture, but instead mix the soil with lime/gypsum through a high pressure blowing system. The system is designed to attach to the standard Rula-Agri Rip Max rippers, but can be readily attached to your existing ripper.

MULTI-PURPOSE LIME & SOIL CONDITIONING

PRECISION READY



Condition soil according to prescription maps with Müller Elektronik ISOBUS rate controller

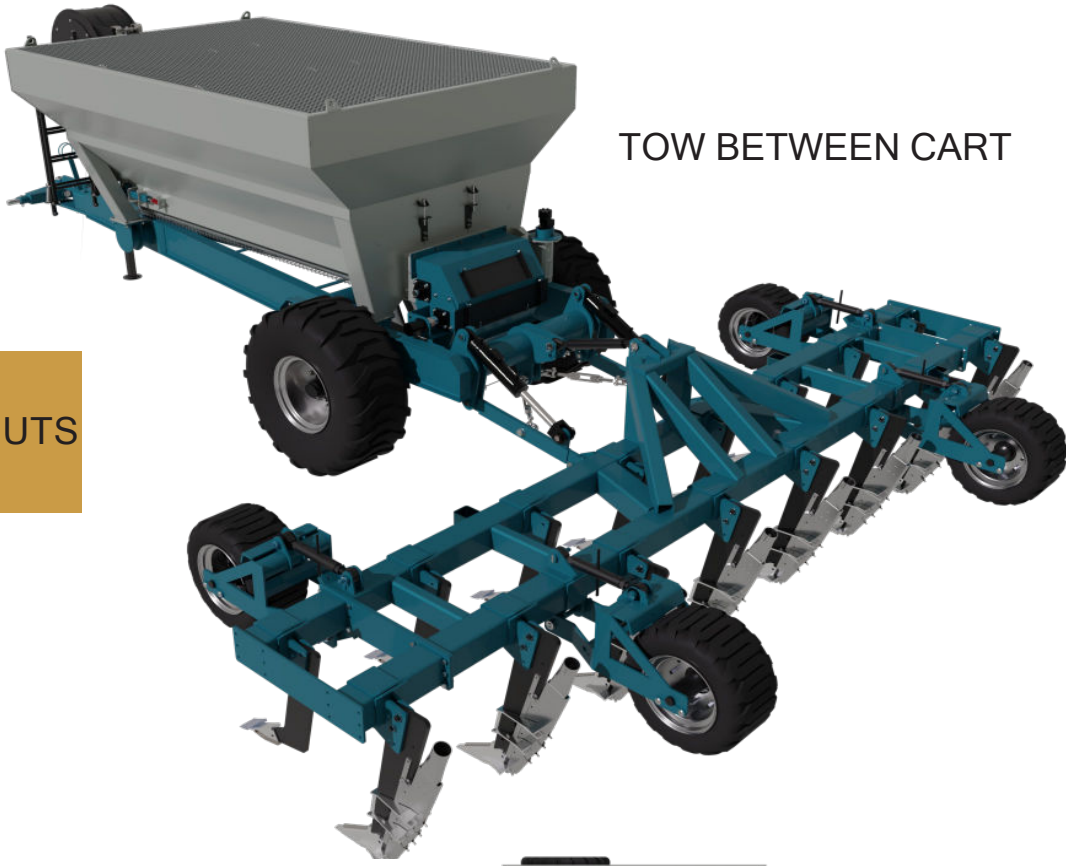


OPTIONAL AUTOMATIC RESET TINE



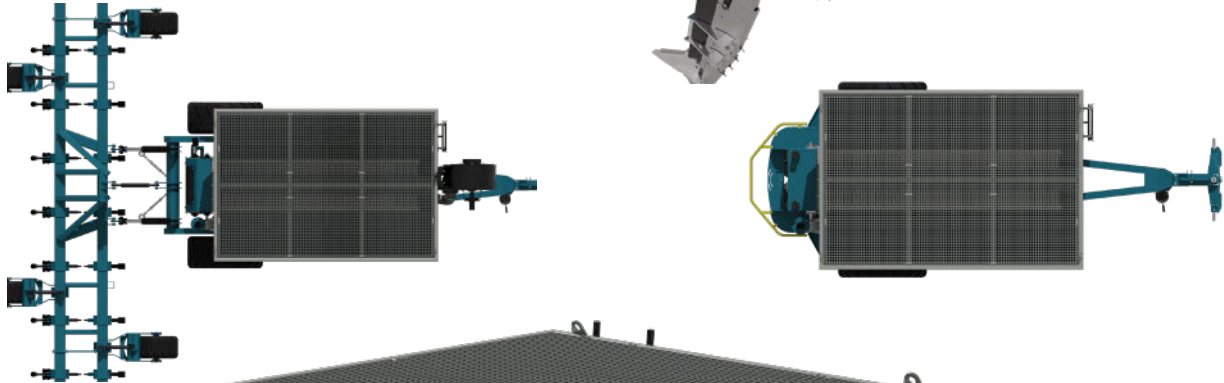
- 8m³ Bin capacity
- Grating for rocks or foreign material
- Flotation tyres
- Precision metering with Müller Elektronik
- Crusher mechanism with venturi conveying system
- Double stage hydraulic driven fan
- Attach easily to ripper frame
- Specialised deep applicator tines

THE TOW BETWEEN CART CAN BE TRANSFORMED INTO A SPREADER TO SERVE AS A MULTI-PURPOSE IMPLEMENT



TOW BETWEEN CART

VARIOUS TINE
OPTIONS AND LAYOUTS
AVAILABLE

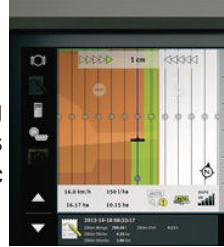


AVAILABLE
WITH MODULAR
SPREADER
ATTACHMENT!

PRECISION READY



Condition soil according
to prescription maps
with Müller Elektronik
ISOBUS rate controller



RULA

AGRI

CUSTOM AGRICULTURAL SOLUTIONS DESIGNED AND MANUFACTURED IN SOUTH AFRICA

SERVICES

Mechanical Design

Structural Design

Manufacturing

Finite Element Analysis

Bulk Material Handling

Flow Dynamics

Rula-Agri specialises in custom designs. Our wide range of engineering capabilities ensure that we are able to provide you with exactly what you and your farm require.
CONTACT US TODAY!



YouTube

www.rula-agri.co.za

+27 (0) 11 795 1040

info@rula.co.za

42 Kielboot Avenue
Honeydew, Gauteng
South Africa