

**SERVICES**

- Mechanical Design
- Structural Design
- Manufacturing
- Finite Element Analysis
- Bulk Material Handling
- Flow Dynamics

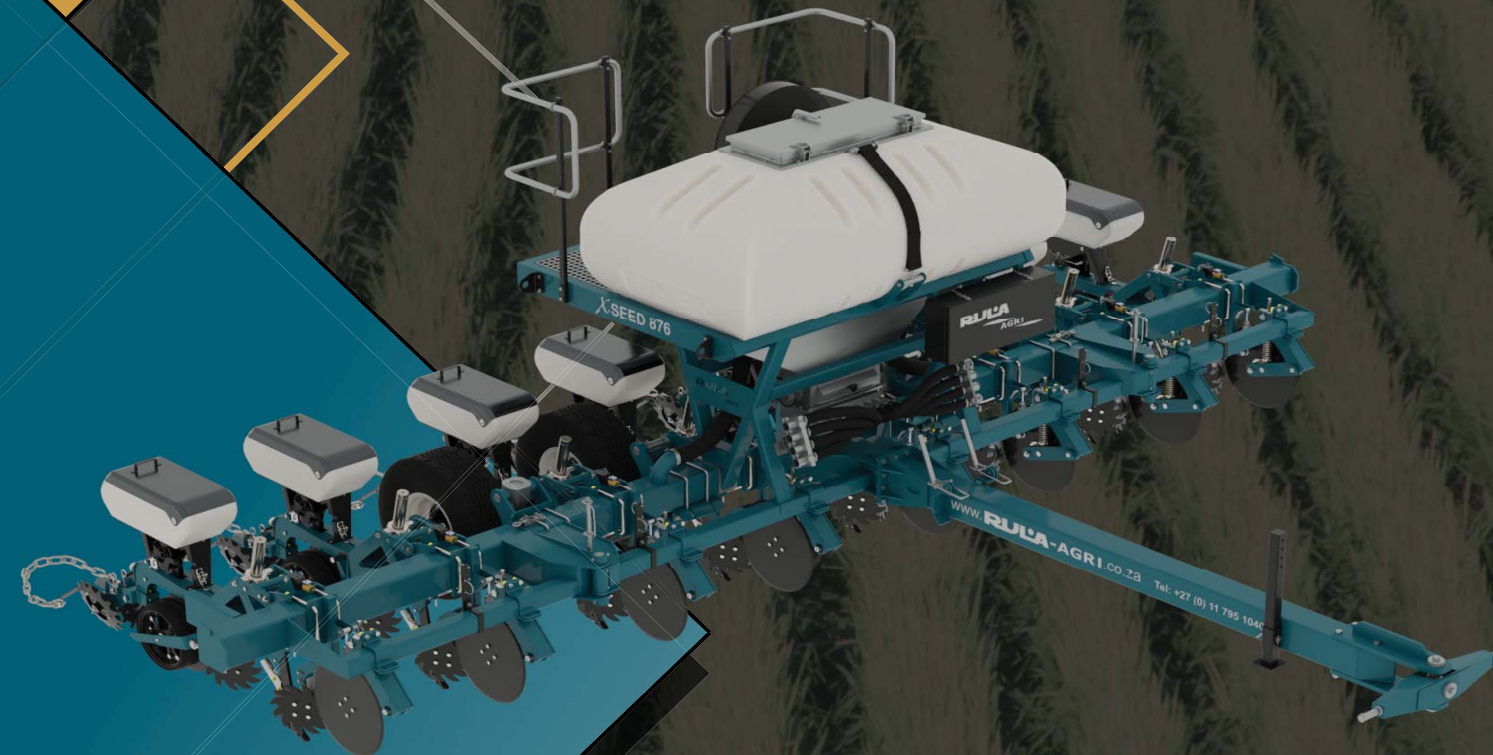
Planter Implement Configurations				
Number of Rows Available:				
6	8	10	12	16
Kilo Watts Required (12 kW per Unit):				
72 kW	96 kW	120 kW	144 kW	192 kW
Row Spacing:				
514	762	914	T/L	
Tank Capacities: (Liquid & Granular Fertiliser)				
2000 ℓ	3500 ℓ	4000 ℓ	6000 ℓ	8000 ℓ



**Tow-Behind Options Available  
For Increased Capacity**

Rula-Agri specialises in custom designs. Our wide range of engineering capabilities ensure that we are able to provide you with exactly what you and your farm require.  
**CONTACT US TODAY!**

**RULA-AGRI**  
MIN TILL PLANTER



# MIN-TILL PLANTER

CONTACT US TODAY

info@rula-agri.co.za  
www.rula-agri.co.za  
+27(0) 11 795 1040



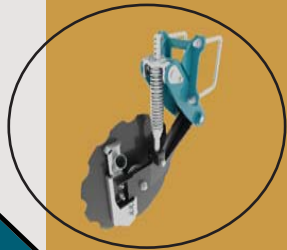
## IN-HOUSE DEVELOPED DOWN-FORCE / UP-FORCE

The DF / UF system is controlled from a cab mounted touch screen with in-time adjustment and data display.



## CUTTING COULTER

Coulters are fitted with a spring-loaded cutting coulters (Ø560) and can be adjusted with ease (Different coulters options are available).



## TINE'S HYDRAULIC BREAK-AWAY ACTION

The hydraulic pressure on the tine assembly is adjustable through the use of an accumulator. The positioning of the hydraulic tine within the parallel link (which is also adjustable) can also act as a mechanical down/up force on your seeding unit.

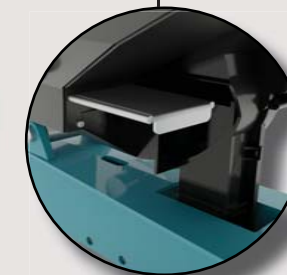


## SEEDING

70 l seed hoppers with steel lids as standard with the option of a central seeding alternative.

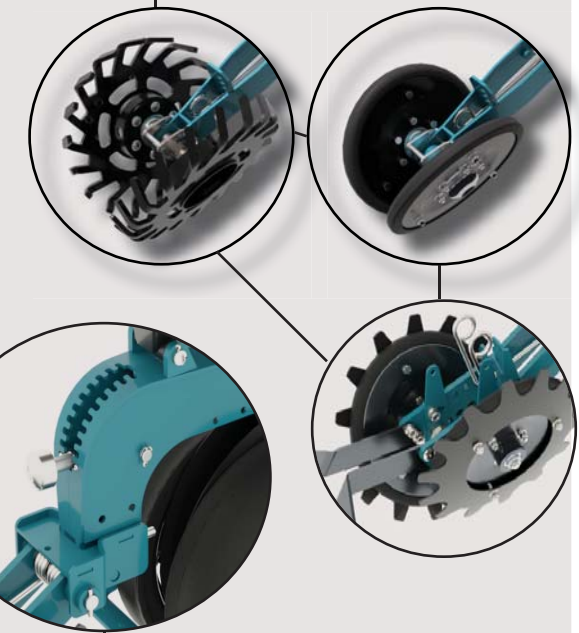
## METERING

Use of the popular Precision vSet 2 seed meter along with the Bullseye seed tube ensures accuracy and precision.



## CLOSING SYSTEMS

Choose from our various closing wheel combinations.



## DEPTH ADJUSTMENT

A quick planting depth adjustment.

## SEED DISCS

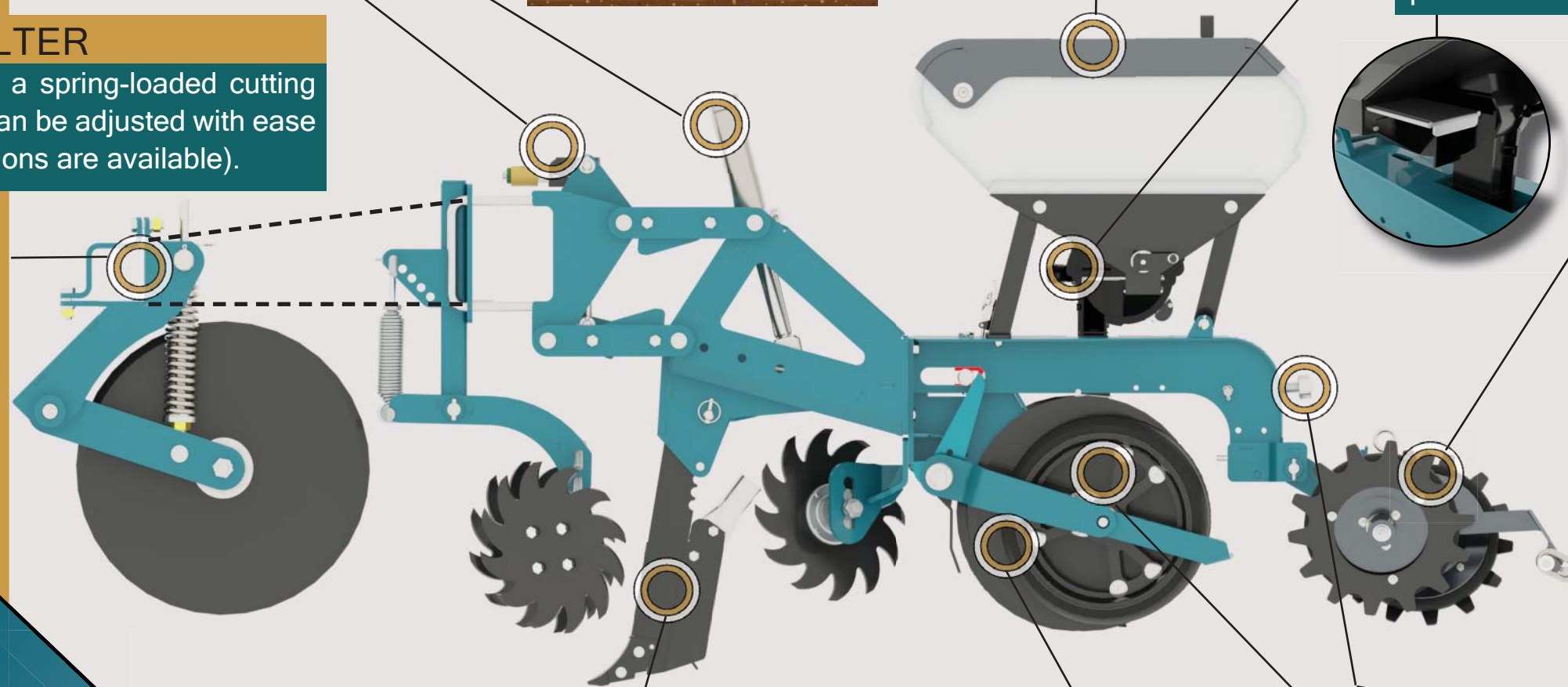
Seed discs (Ø450) are fitted with a leading edge at 8.5° furrow opening angle.

## WHEEL SPACING

Adjustable wheel spacing enables a wide & narrow rolling configuration.

## FERTILISER APPLICATION

Fertiliser application is done through a 16mm tine made from Hardox 450 that is also hard-faced for increased durability. The tine has a maximum working depth of 250mm and a maximum break-away force of 500kg.



**RULA**  
AGRI

DESIGNED AND  
MANUFACTURED IN  
SOUTH AFRICA

